

COMPETENCE IN AUTOMATION

WEMO.

WGS
WEMO GRIP SYSTEM

End Of Arm Tooling (EOAT)



Flexibility and user-friendliness are keywords that characterize all products from Wemo Automation AB. We've been manufacturing robots for over 25 years, and have a vast pool of experience in solutions that simplifies robotization in the plastics industry.

The same basic principle applies to our peripheral components, which you can use to make your robot cell into a complete solution.

Today, Wemo takes care of the whole chain from design, development and components manufacture to assembly of customized solutions and distribution of our automation components.

Now we present our new catalogue with a complete range of components for End Of Arm Tooling (EOAT).

Wemo's standardized components are designed by users – for users.



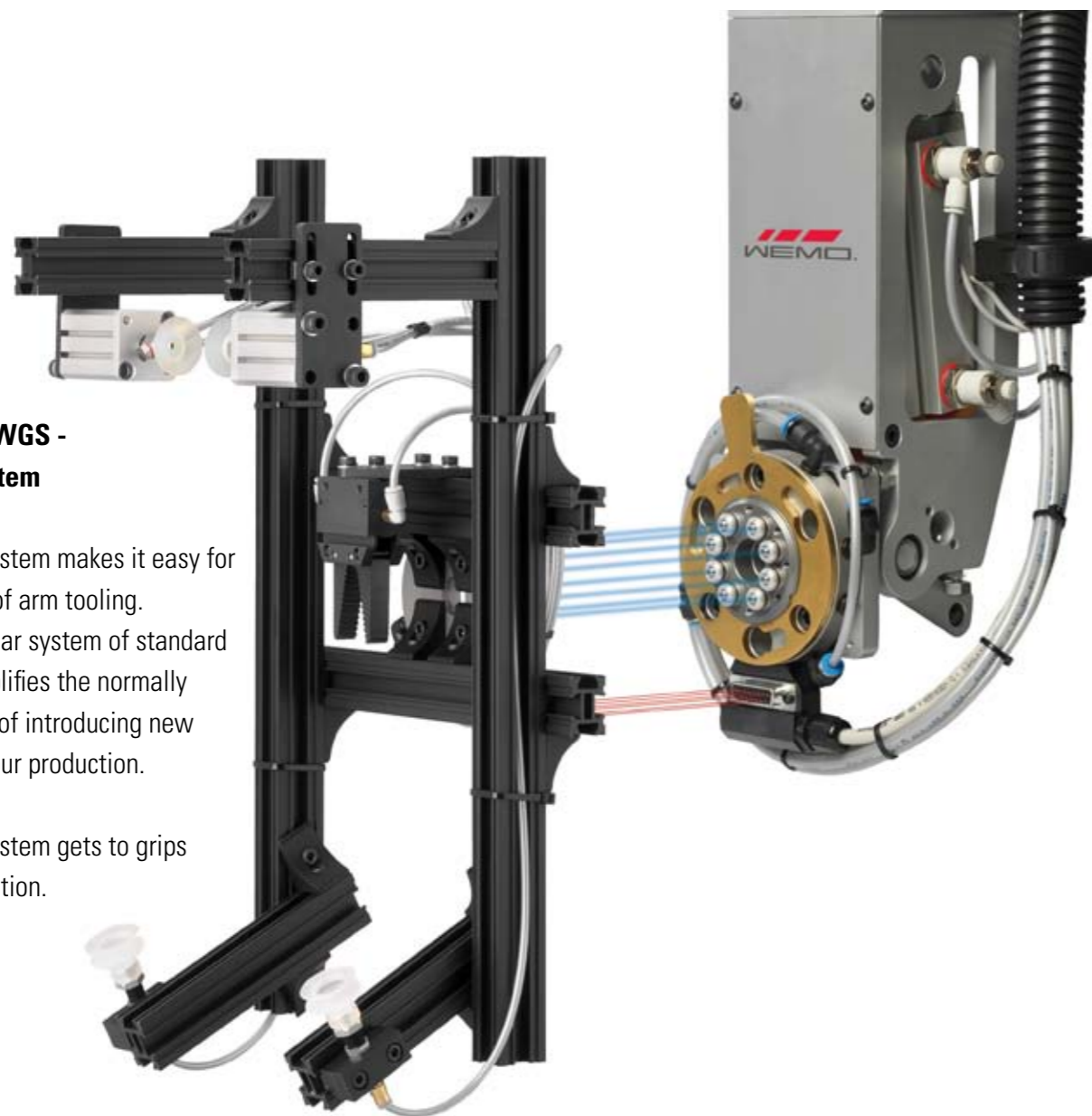
Advantages of Wemo Grip System	A:01 - A:11
WGS Quick-Lock Quick change system	B:01 - B:15
WGS Vacuum cups and suspensions	C:01 - C:20
WGS Grippers and cylinders	D:01 - D:19
WGS Mounting brackets	E:01 - E:08
WGS Air nippers for sprue cutting	F:01 - F:05
WGS Profiles and fastening brackets	G:01 - G:10
WGS Fittings and tubings	H:01 - H:07
WGS Application examples	I:01



Advantages of WGS - Wemo Grip System

The WGS Grip System makes it easy for you to build end of arm tooling. Our simple modular system of standard components simplifies the normally complex process of introducing new components in your production.

The WGS Grip System gets to grips with your automation.



- Flexible modular system compatible with all types of robots and applications.
- Easy to assemble without special tools and machinery.
- Cost-effective with serial-produced components.
- No specialist expertise needed for assembly.
- Components can be reused with new gripper.
- Quick assembly thanks to completed components.
- Low weight means light grippers, speed and stability.

Five simple steps with the WGS Grip System

To give you an easy overview of how to build up a EOAT with the WGS Grip System, we've created a 5-step picture sequence.

Of course there are many different ways to build your EOAT, but this is a fairly simple way to get started.



1. Mount the horizontal profiles on the Quick Lock Gripper part.



2. Mount the vertical profiles on the horizontal profiles. This gives you maximum flexibility in two directions for making adjustments for individual parts.



3. Put the mounting elements and coupling parts on the vertical profiles.



4. Now you can position the vacuum cups, gripping pliers and cylinders.



5. Finally, mount the nipples, fittings and tubes. The EOAT is ready for use.



One advantage of the WGS Grip System is that it allows you to build many different combinations with a reduced number of components. This is unique to our components.

Here are some common combinations using WGS Grip System for various EOAT applications:

Vaacum cups and suspensions with various coupling parts



GPF



FBL



FBL+VF



GPF+FB



GPF+FLR



FBL+ND



2xGPF



GPF+VA

Grippers, cylinders and air nippers with various parts of connectors



GP1+GDV1+GKV1



GP1+GDP+GKP



GPF+VF+GF+GDV1+GKV2



GP2+GDV2



FBL+GF2+GDV2



GP2+GDV3



FBL+FB+GF1+GDV1+GKV1



CP20+LC2020+FRP1

Grippers, cylinders and air nippers with various parts of connectors



FBL+CF20+LC2020+CN1



CP20+LC2020+TP



FBL+KTF+KT+KK-V



KTP+KT+KK-R



FBL+VF+KTF+KT+KK-V



GPF



GPF+GDV4



FBL+GF+GDP3

Profiles with various connectors and brackets



GPSV



GPSV



GPSVP



GPH



GPK



2xGPSV



GPVH



FP1+SF



GPF+FLR+SP



FBL+FLR+TP



GPJV



KFB

WGS Starter Kit - a simple way to get started

The WGS GBL1 is a starter kit to help you easily get started with your gripper production. The kit includes more than 300 of the most common components, enabling you to build 8-9 different grippers for your robotic automation.

The starter kit also includes a guide on how to build grippers, examples of finished grippers and a specification of the kit's contents so that you can easily add extra components as necessary.

Article no	Type
021018	WGS-GBL1



WGS Professional Kit - a wide package with components for a more complex design of EOAT

The WGS GBL2 is a more wide package of components for designing EOAT storage in 4 assortment boxes. The kit includes more than 600 parts of the most common components as well as components for more complex design of EOAT. A package of all profiles is included.

The kit includes also a nice box organizer with 4 assortment boxes which is easy to bring to the place where you need it.

A guide on how to build EOAT, examples of finished EOAT and specification of the kit's contents so you can easily add extra components as necessary.

Article no	Type
021019	WGS-GBL2





EOAT example 1

Vacuum EOAT for 1-cavity bucket part.



EOAT example 2

Vacuum EOAT for 2-cavity lid parts.



Position	Article no	Type	Quantity
1	021012	WGS-QLGD1	1
2	022292	WGS-GPSVP	2
3	022086	WGS-GP3022	1
4	022040	WGS-GPF1-G1/8"	2
5	022036	WGS-GPM-M5x10	6
6	022180	WGS-VA3-G1/8"	2
7	022090	WGS-LM-G1/8"	2

Position	Article no	Type	Quantity
8	022053	WGS-NP-1/8"	3
9	022057	WGS-TP-G1/8"	1
10	022049	WGS-VN-G1/8"	2
11	022268	WGS-VBK30-PU	2
12	022196	WGS-RKI-6-G1/8"	3
13	022192	WGS-VKI-6	1
14	022233	WGS-PUR 6x4	1

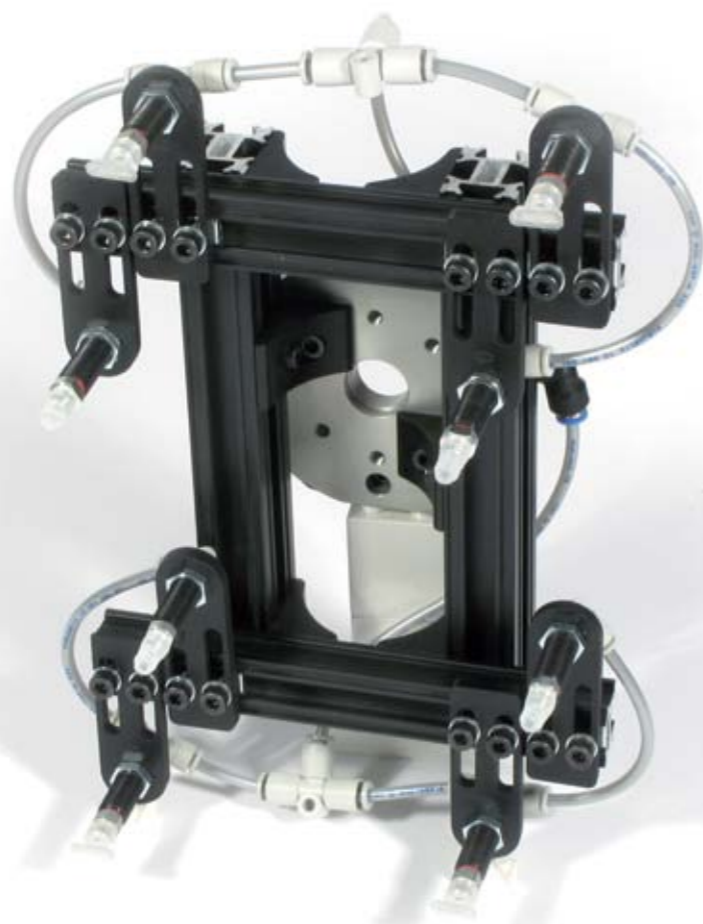
Position	Article no	Type	Quantity
1	021012	WGS-QLGD1	1
2	022292	WGS-GPSVP	2
3	022086	WGS-GP3022	1
4	022040	WGS-GPF1-G1/8"	4
5	022036	WGS-GPM-M5x10	10
6	022286	WGS-FB10L-M5	4

Position	Article no	Type	Quantity
7	022052	WGS-NP-M5	8
8	022056	WGS-TP-M5	2
9	022014	WGS-VBK25-Si	4
10	022054	WGS-NPS-M5	6
11	022193	WGS-VKI-6-4	2
12	022232	WGS-PUR4x2,5	1



EOAT example 3

Vacuum EOAT for 4-cavity mobile phone parts.



Position	Article no	Type	Quantity
1	021012	WGS-QLGD1	1
2	022292	WGS-GPSVP	2
3	022107	WGS-GPSV	4
4	022033	WGS-GP2216	2
5	022086	WGS-GP3022	2
6	022040	WGS-GPF1-G1/8	8
7	022036	WGS-GPM-M5x10	26
8	022196	WGS-FLR-30-G1/8	8
9	022106	WGS-VNM-M5	4

Position	Article no	Type	Quantity
10	022102	WGS-VNO-M5	4
11	022052	WGS-NP-M5	8
12	022019	WGS-VOK5x15-Si	4
13	022115	WGS-VBK05 Si	4
14	022197	WGS-VKI-4-M5	4
15	022238	WGS-TIG-4-M58	4
16	022199	WGS-TI 3X4	2
17	022193	WGS-VKI-6-4	2
18	022232	WGS-PUR4x2,5	1

EOAT example 4

Vacuum EOAT for 2-cavity automotive parts with sprue.



Position	Article no	Type	Quantity
1	021012	WGS-QLGD1	1
2	022292	WGS-GPSVP	2
3	022107	WGS-GPSV	4
4	022033	WGS-GP2216	1
5	022086	WGS-GP3022	3
6	022040	WGS-GPF1-G1/8"	8
7	022036	WGS-GPM-M5x10	29
8	022166	WGS-VF-G1/8	4
9	022176	WGS-FLR-90-G1/8"	4
10	022048	WGS-VN-M5	4
11	022049	WGS-VN-G1/8"	4

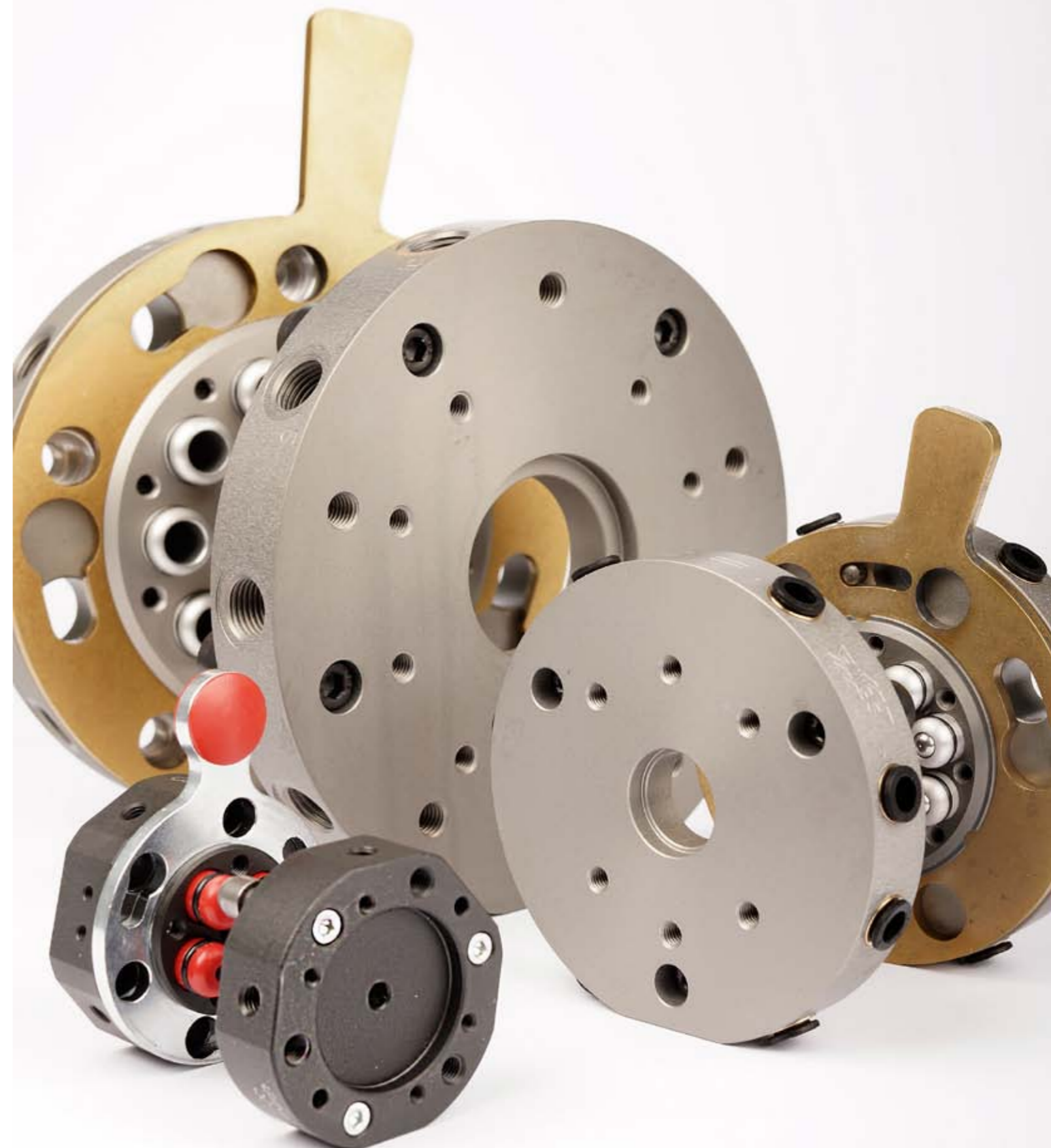
Position	Article no	Type	Quantity
12	022052	WGS-NP-M5	4
13	022053	WGS-NP-1/8"	8
14	022057	WGS-TP-G1/8"	4
15	022293	WGS-GDV2	1
16	022300	WGS-GP2	1
17	022257	WGS-VKI-4-G1/8"	4
18	022239	WGS-TIG-4-G1/8"	4
19	022197	WGS-VKI-4-M5	1
20	022244	WGS-DKI-6-4	1
21	022232	WGS-PUR4x2,5	1
22	022233	WGS-PUR6x4	1





EOAT example 5

Vacuum EOAT for storage box with lateral gripping.



Position	Article no	Type	Quantity
1	021012	WGS-QLGD1	1
2	022292	WGS-GPSVP	2
3	022107	WGS-GPSV	4
4	022086	WGS-GP3022	3
5	022040	WGS-GPF1-G1/8"	2
6	022036	WGS-GPM-M5x10	19
7	022174	WGS-FLR-30-G1/8"	2
8	022048	WGS-VN-M5	2
9	022049	WGS-VN-G1/8"	4

Position	Article no	Type	Quantity
10	022052	WGS-NP-M5	4
11	022111	WGS-LC2020	2
12	022128	WGS-CP20	2
13	022125	WGS-FRP1	2
14	022197	WGS-VKI-4-M5	6
15	022194	WGS-RKI-4-M5	4
16	022242	WGS-YKI-4	2
17	022232	WGS-PUR4x2,5	1
18	022233	WGS-PUR6x4	1



Advantages of WGS Quick-Lock Quick Change System

The WGS Quick-Lock system consists of two parts. One part mounts onto the robot (WGS QLRD) and the other part is for building your gripper on (WGS-QLGD).

No tools are needed for changing the gripper. Just twist the locking lever with a simple thumb action, and the gripper will detach from the robot part.

The WGS Quick-Lock quick change system offers several advantages when you change the gripper on your robot.

Precision – The Quick-Lock system ensures that you always mount the gripper correctly to your robot. This prevents damage to tools or peripherals due to incorrect mounting.

Speed – You detach the gripper part from the robot with a simple thumb action in a fraction of the time it takes to remove a traditional coupling with screws and positioning pins. Vacuum and/or compressed air circuits and electrical signals are automatically connected during the change.

Safety – Integrated connections for vacuum, compressed air and electrical signals eliminate the need for specialist knowledge on how to connect them. This saves you having to follow complicated instructions for switches etc.

Standardization – Because the WGS Quick-Lock system can be connected to all types of robots, you can use this system to standardize your automation. Even if you have to move tools between different machines and robots, you can easily start up in other machine cells with the same system.

Description of WGS Quick-Lock concept:

You connect your vacuum or compressed air tubes to the peripheral surface of the quick change system. These tubes are then opened by integrated check valves when you connect the gripper part, so you don't need to connect the various tubes running from the robot to the gripper.

When you detach the gripper part from the robot part, the connections attached to the quick change system are automatically blocked, preventing compressed air circuits (if there are any) from blowing straight out into the air.

The system also allows the option of connecting electrical connectors for ordinary 24VDC signal transmission between the robot and gripper. This is useful if you have a sensor or other electrical equipment installed on the gripper.

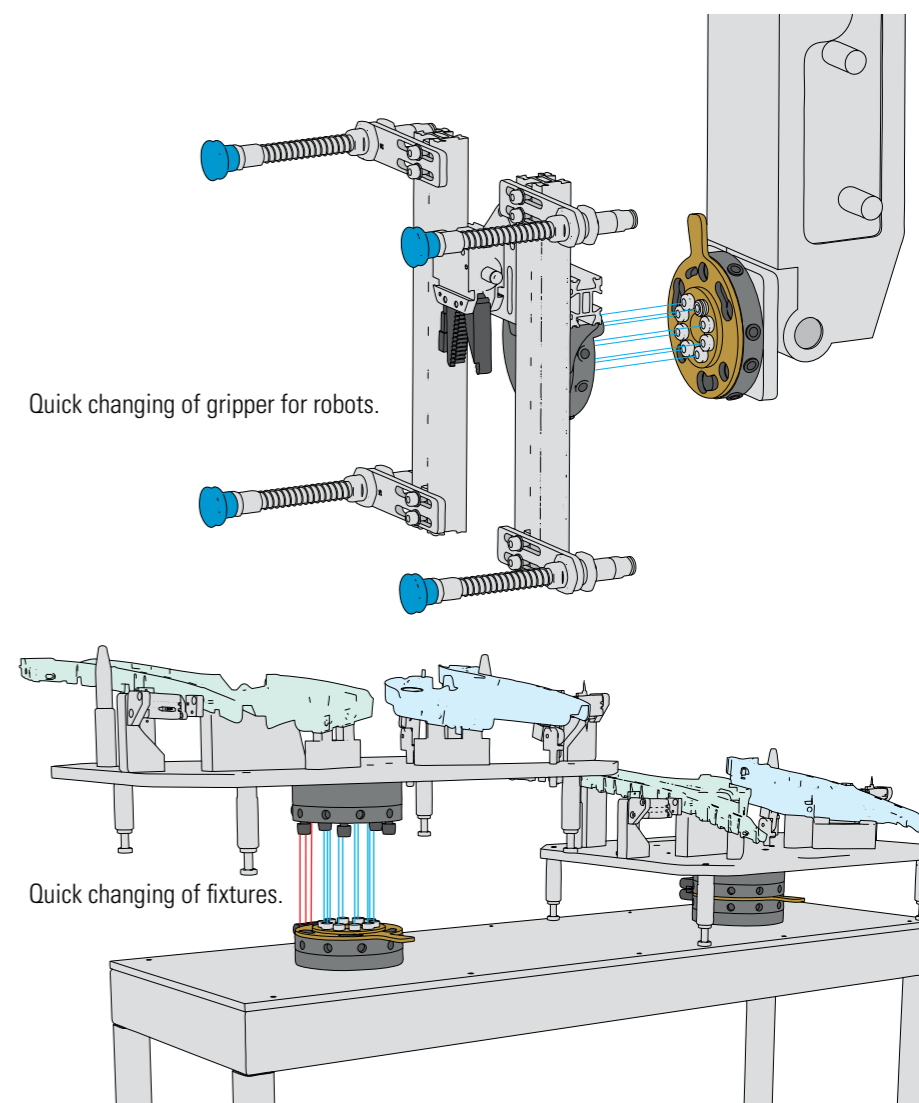


Applications for the WGS Quick-Lock Quick Change System

The WGS Quick-Lock is primarily used for changing the EOAT, but in many cases it can also be used as a flexible system for quick changing of peripheral units in a robotic cell.

Quick changing of fixtures is another situation where you need to be able to easily change units specific to particular parts. You can also obtain vacuum/compressed air circuits, and can easily connect electrical signals to the various fixtures.

Quick changes of peripherals, where whole units need to be changed easily, is another application area for the WGS Quick-Lock. It also allows precise positioning of the units and simple media transmission.



Quick changing of peripheral units in a robotic cell.

WGS Quick-Lock sizes

WGS Quick-Lock quick change system consists of 3 models for different sizes and types of robot automation.

NEW!



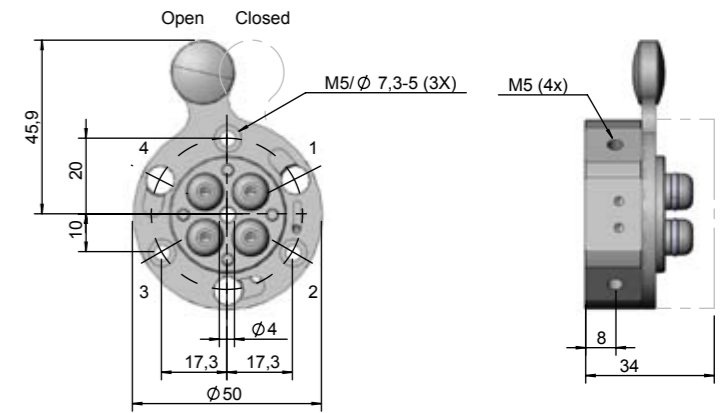
WGS Quick-Lock Mini

NEW!



WGS QLRD Mini

Robotpart, a small quick change system for end of arm tooling. The robotpart is easy to assembly by 3 screws. Up to 4 vacuum or compressed air circuits can be connected. The system fits all kind of lighthweigh handling on robots.



Article no	024001
Type	WGS-QLRD Mini
Max pull-, push force	150 N
Max rotating torque	20 Nm
Max bending torque	10 Nm
Air connections	4 x M5
Transmittable media	6 Bar
Vacuum	-1 Bar
Weight	103 g



WGS Quick-Lock Midi



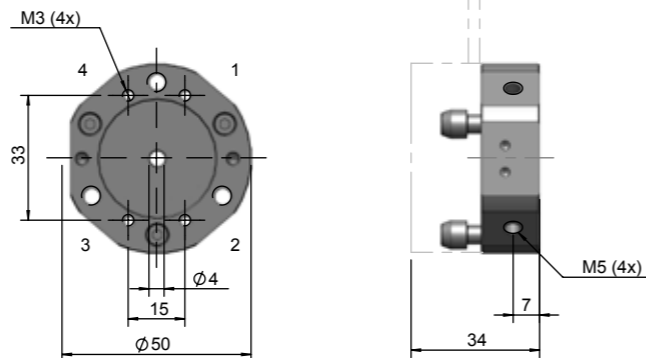
WGS Quick-Lock Maxi

Accessories



QLGD1 Mini

NEW!

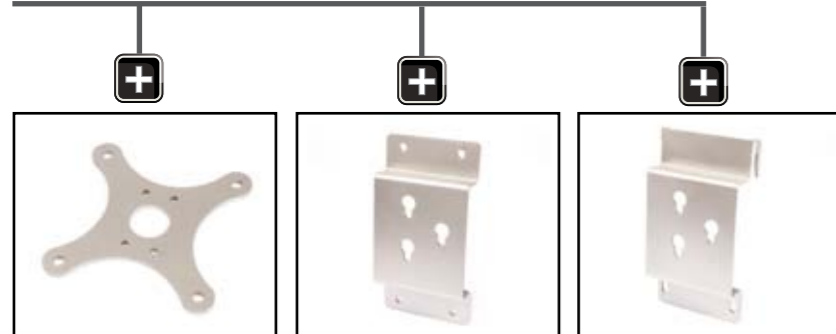


WGS-QLGD Mini

Gripper part, a small quick change system for end of arm tooling. Air tubes will be connected at numbered ports.

Article no	024002
Type	WGS-QLGD Mini
Max pull-, push force	150 N
Max rotating torque	20 Nm
Max bending torque	10 Nm
Air connections	4 x M5
Transmittable media	6 Bar
Vacuum	-1 Bar
Weight	65 g

Accessories



WGS-GPI3

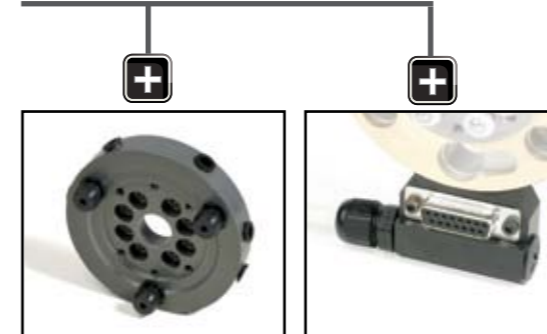
WGS-HQLV Mini

WGS-HQLN Mini

WGS-QLRD Midi

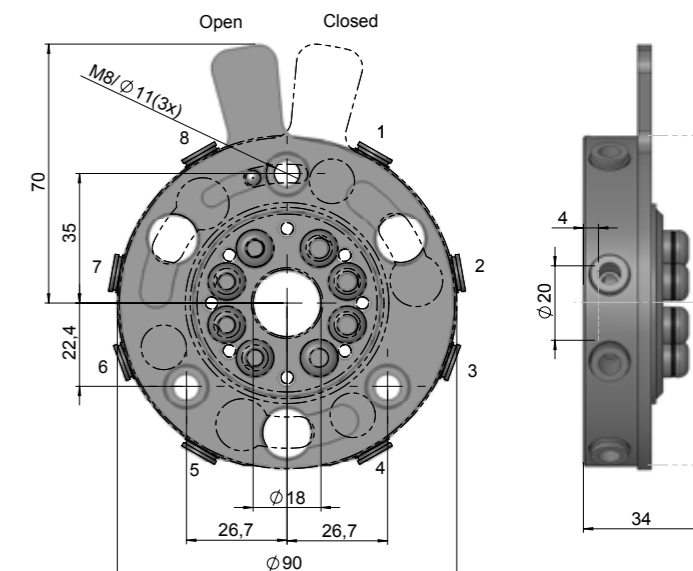
Robot part, a quick-change system for End-of-arm tooling. The robot part is easy to assembly by 3 screws. Up to 8 vacuum or compressed air circuits can be connected. The system fits to all kind of robots.

Accessories

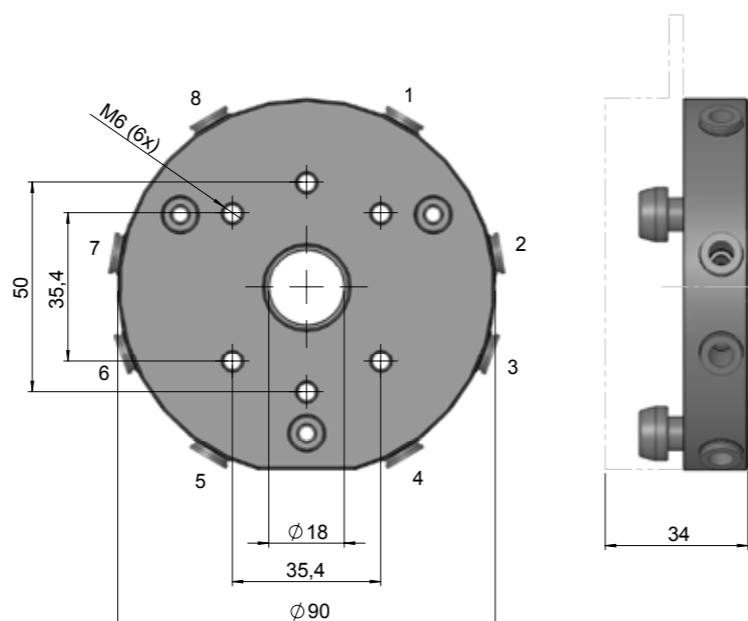


WGS-QLGD1 Midi

WGS-QLEKRD



Article no	021011 with valves	021013 without valves
Type	WGS-QLRD Midi	WGS-QLRD Midi
Max pull-, push force	400 N	400 N
Max rotating torque	100 Nm	100 Nm
Max bending torque	50 Nm	50 Nm
Repeatability	+/- 0,025 mm	+/- 0,025 mm
Air connections	8 x Ø6 mm	8 x Ø6 mm
Transmittable media	6 Bar	6 Bar
Vacuum	-1 Bar	-1 Bar
Weight	460 g	410 g

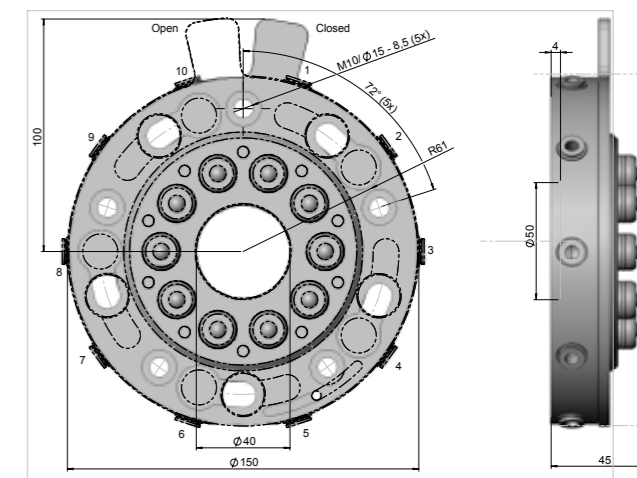
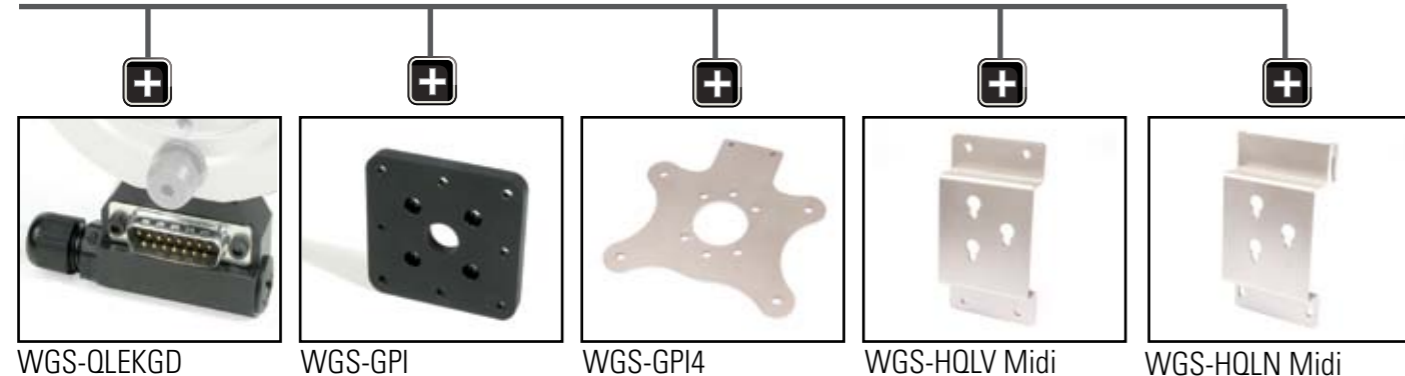


WGS-QLGD1 Midi

Gripper part, a quick-change system for End-of-arm tooling. Air tubes will be connected at numbered connectors.

Article no	021012
Type	WGS-QLGD1 Midi
Max pull-, push force	400 N
Max rotating torque	100 Nm
Max bending torque	50 Nm
Repeatability	+/- 0,025 mm
Air connections	8 x Ø6 mm
Transmittable media	6 Bar
Vacuum	-1 Bar
Weight	225 g

Accessories

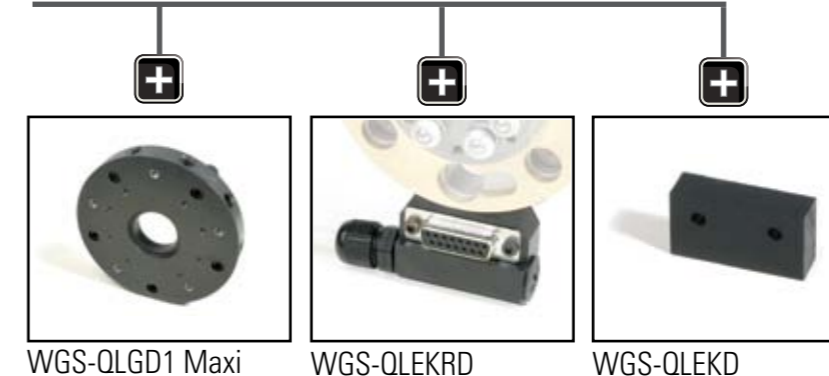


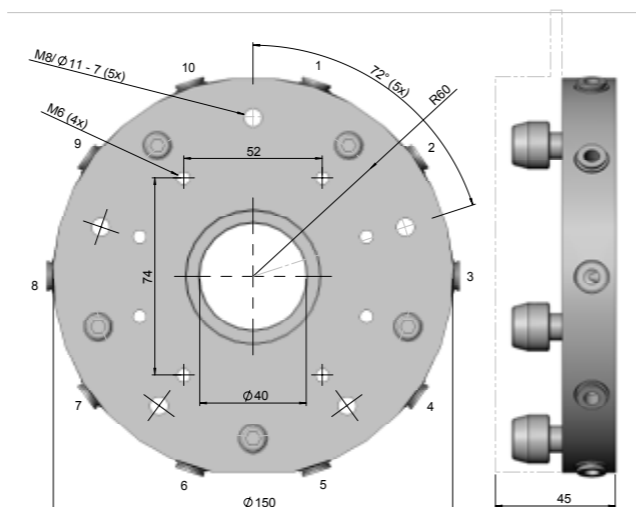
WGS-QLRD Maxi

Robot part, a quick-change system for End-of-arm tooling. The robot part is easy to assembly with 5 screws. Up to 10 vacuum or compressed air circuits can be connected. The system fits to all kind of robots.

Article no	021014
Type	WGS-QLRD Maxi
Max pull-, push force	1 000 N
Max rotating torque	250 Nm
Max bending torque	100 Nm
Repeatability	+/- 0,025 mm
Air connections	10 x 1/4"
Transmittable media	6 Bar
Vacuum	-1 Bar
Weight	1 200 g

Accessories



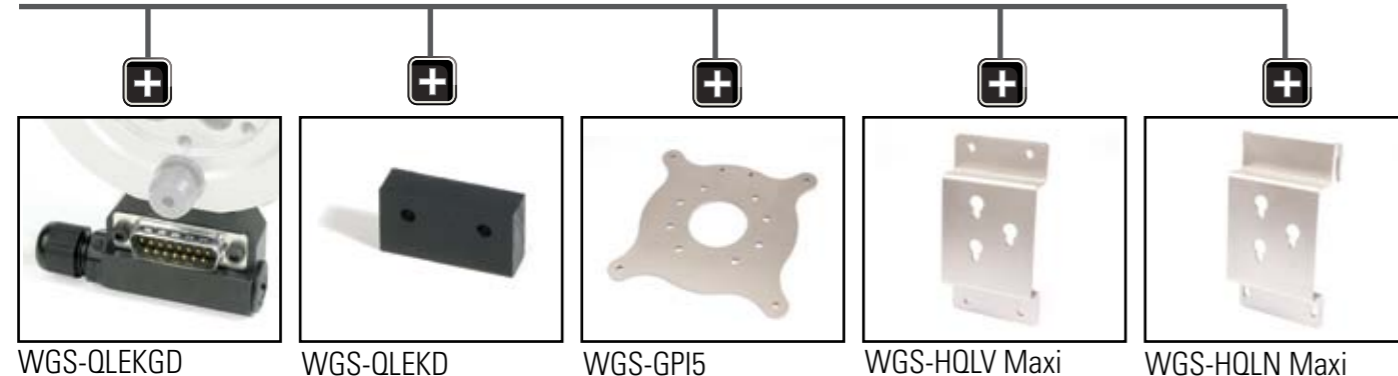


WGS-QLGD1 Maxi

Gripper part, a quick-change system for End-of-arm tooling. Air tubes will be connected at numbered connectors.

Article no	021015
Type	WGS-QLGD1 Maxi
Max pull-, push force	1 000 N
Max rotating torque	250 Nm
Max bending torque	100 Nm
Repeatability	+/- 0,025 mm
Air connections	10 x 1/4"
Transmittable media	6 Bar
Vacuum	-1 Bar
Weight	900 g

Accessories



WGS-QLEKGD

WGS-QLEKD

WGS-GPI5

WGS-HQLV Maxi

WGS-HQLN Maxi



Electrical connectors for the WGS Quick-Lock Quick Change System

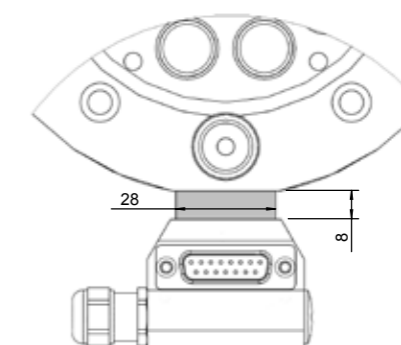
When you need to transmit electrical signals between the robot and the gripper, you can supplement the WGS Quick-Lock system with electrical connectors.

Simply mount the female part (WGS-EKRD) on the robot part and mount the male part (WGS-EKGD) on the gripper.

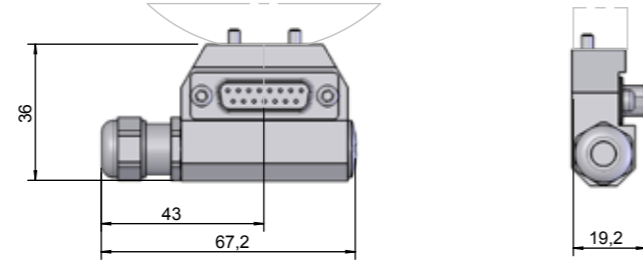
The connector has a 15-pole connection (pin/sleeve) that screws into the connector, allowing easy connection of cables without soldering or costly sleeve pliers.

The connectors fit both the Midi and Maxi WGS Quick-Lock. However, a WGS QLEKD spacer plate (between the connector and the Quick-Lock part) is required for the Maxi version.

Technical data connector	
Connector type	15-pole D-sub (female for robot part, male for gripper part)
Nominal voltage	250 VAC
Nominal current	3 A
Contact pins	Gold plated



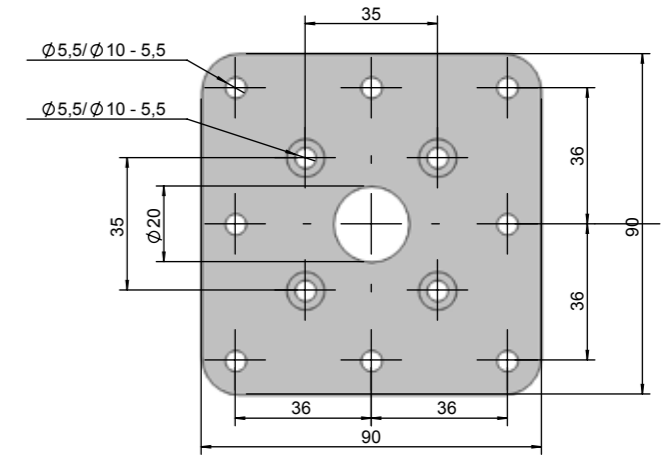
Article no	Type
021039	WGS-QLEKD



Article no	021035
Type	WGS-QLEKRD for robotpart
Number of electrical signals	15
Max voltage and current	24 VDC / 0,5 A
Material	Anodized black aluminium

WGS-QLEKRD

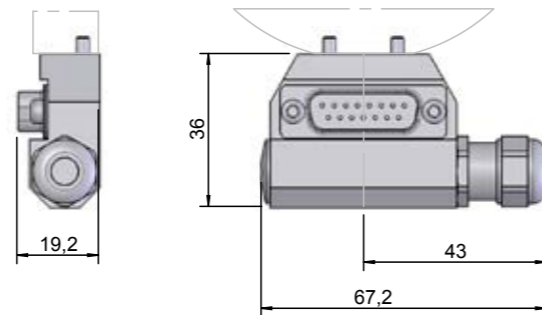
Electrical connector for robot part with 15-pole connection
 NB: For WGS QLGD Maxi, you need a WGS QLEKD spacer plate (between the connector and the Quick-Lock part).



Article no	022044
Type	WGS-GPI1
Material	Aluminium
Thickness	10 mm
Surface treatment	Anodized black
Weight	190 g

WGS-GPI1

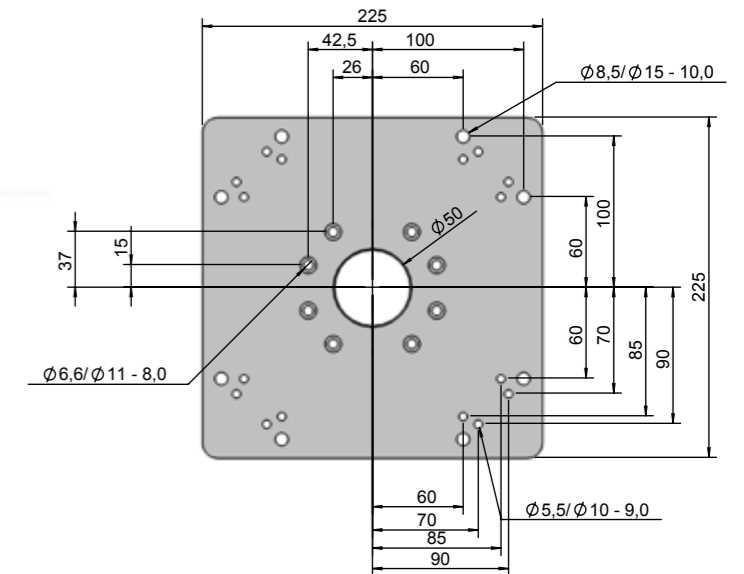
Fixing plate for direct assembly of profiles to the gripper part.
 Fitting WGS-QLGD1-MIDI.



Article no	021036
Type	WGS-QLEKGD för gripdel
Number of electrical signals	15
Max voltage and current	24 VDC / 0,5 A
Material	Anodiserat svart aluminiumhus

WGS-QLEKGD

Electrical connector for gripper part with 15-pole connection.
 NB: For WGS QLGD Maxi, you need a WGS QLEKD spacer plate (between the connector and the Quick-Lock part).

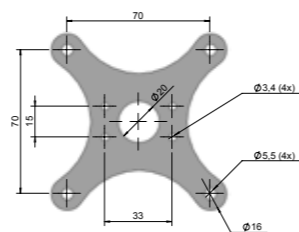


Article no	021017
Type	WGS-GPI2
Material	Aluminium
Thickness	15 mm
Surface treatment	Anodized black
Weight	1 800 g

WGS-GPI2

Fixing plate for direct assembly of profiles to the gripper part.
 Fitting WGS-QLGD1-MAXI.

NEW!

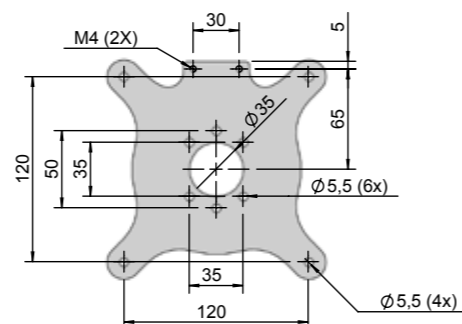


Article no	022401
Type	WGS-GPI3
Material	Steel
Thickness	2 mm
Surface treatment	Zink plated
Weight	54 g

WGS-GPI3

Thin fixing plate for direct assembly of profiles to the gripperpart type QLGD Mini.

NEW!

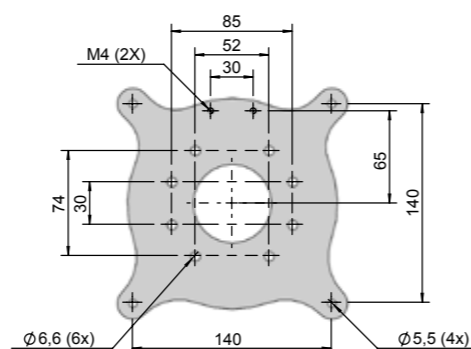


Article no	022402
Type	WGS-GPI4
Material	Steel
Thickness	3 mm
Surface treatment	Zink plated
Weight	203 g

WGS-GPI4

Thin fixing plate for direct assembly of profiles to the gripperpart type QLGD Midi. For this type it is also possible to assemble spruegripper type WGS-GDV2, -GDV3 direct on the plate.

NEW!



Article no	022426
Type	WGS-GPI5
Material	Steel
Thickness	4 mm
Surface treatment	Zink plated
Weight	557 g

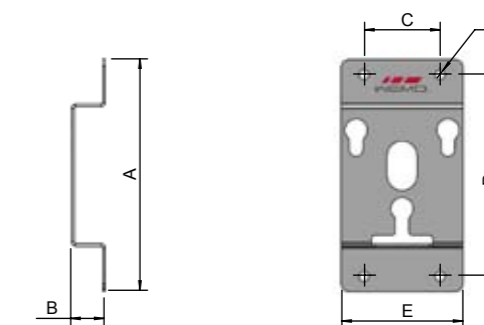
WGS-GPI5

Thin fixing plate for direct assembly of profiles to the gripperpart type QLGD Maxi. For this type it also possible to assemble spruegripper type WGS-GDV2, -GDV3 direct on the plate.

NEW!

WGS-HQL

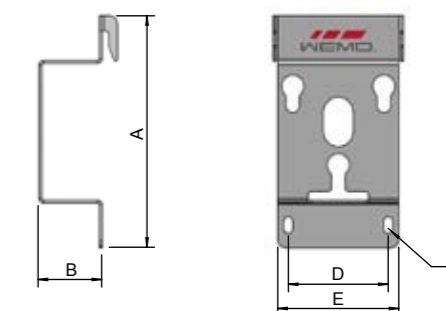
Holder for storage of EOAT with Quick-Lock adapters. Two types of holders for each size of Quick change system are available.



WGS-HQLV

For mounting on walls

Article no	Type	A	B	C	D	E	F
022403	WGS-HQLV Mini	153	22	50	133	80	Ø6,5
022404	WGS-HQLV Midi	153	22	50	133	80	Ø6,5
022405	WGS-HQLV Maxi	248	42	100	218	145	Ø8.2



WGS-HQLN

For mounting on safetywalls with wire mesh (WSS safety wall elements)

Article no	Type	A	B	C	D	E
022423	WGS-HQLN Mini	153	22	Ø6	66	80
022424	WGS-HQLN Midi	153	22	Ø6	66	80
022425	WGS-HQLN Maxi	248	42	Ø6	131	145

NEW!



Advantages of WGS vacuum cups

Vacuum cups are used for parts handling in most applications in the plastics industry. This is the simplest and most cost-effective solution when you build your EOAT. Vacuum cups have a relatively low investment cost, are easy to change and require no external sensor for checking that the parts have been gripped by the EOAT. Vacuum cups normally fall into three categories:

Flat vacuum cups (WGS VPK)

If the surface to be gripped is flat or slightly curved, this type of vacuum cup is usually recommended. Flat vacuum cups provide maximum stability, which is vital when you need high repetition accuracy in your application. The flat cup quickly connects to the surface and sends back a vacuum signal to the robot in the shortest possible time. This is ideal for high speed picking and situations where precision is vital.

Bellow vacuum cups (WGS VBK)

When the surface is curved, or when the surface radius varies, a bellow vacuum cup is the recommended option. This can compensate for unevenness or differences in height between the surface and the cup. The vacuum cup makes a slight lifting movement, which can be useful when you want to separate paper dividers etc. This vacuum cup is usually capable of generating a stronger vacuum on heavy vertical surfaces than other cups. This type of cup is also available in some sizes of VBK Midi with a sealing ring for situations where it is hard to obtain a vacuum, for instance on grooved or slightly irregular surfaces.

Oval vacuum cups (WGS-VOK)

Sometimes the surface area isn't large enough for applying round vacuum cups. In that case, oval vacuum cups may be the solution. This cup generates a stronger vacuum on relatively narrow surfaces than several small round vacuum cups. This type of vacuum cup can also prevent the part from rotating or slipping when the robot moves quickly. NB: If you want to use suspensions, make sure they are rotation-proof to prevent the cup from rotating against the narrow surface.

Material options:

Silicone 0-200°C is the most widely used material for vacuum cups, and is ideal if the parts to be gripped are very hot. However, it may leave imprints on the parts, which can cause problems if the parts are to be printed or coated. In these cases, nitrile or polyurethane are a better choice.

Polyurethane 10-100°C is recommended if your vacuum cups are subject to heavy wear, or if the parts are to be printed or coated and does not leave a marks.

Hitemp 0-160°C is a new silicone-free material which therefore does not leave a mark and is specially developed for handling hot objects that are waiting to be painted. The cups with this material are available in flatcups, bellow cups 1.5, bellow types 2.5 and oval cups. This material has good resistance to abrasion and perfect to use for handling paintable plastic parts.

Various types of couplings for WGS vacuum cups

The vacuum cups are most easily connected using the special WGS vacuum fittings. But there are also various other ways of connecting them, depending on the application. A WGS-VN type vacuum nipple is used when the vacuum cup needs to be connected to the gripper's profile system in the simplest possible way. You can connect it to:

Flat gripper profile mountings, type WGS-GPF1-4.

WGS FBL mounting block.

Angling of the vacuum cup with WGS- VF, WGS-VL and WGS-JF angle adjustment element. Extension at different heights with WGS-FLR or WGS-ND.



VN+FBL



VN+GPF



FBL+VF+VN



GPF+FLR+VN

Angle adapter

Sometimes there is very limited space in the tool for the robot arm and the gripper. In that case, the enclosure needs to be as low as possible. This can be solved with a WGS -VA angle adapter. The tubes are connected at a 90 degree angle to the surface to be gripped. This component can also be used as a T-adaptor to shorten the tubes in the gripper. This makes it faster to reach the set vacuum level, thus reducing the picking time.



GPF+VA+VN

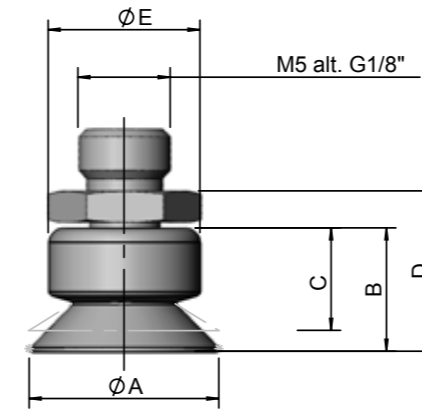
Suspensions

If there is enough space, using suspensions is the optimum solution for coupling the vacuum cups to the gripper. This is the best way of compensating for height differences on the surface to be gripped. Another advantage is that less precision is required in synchronizing the robot's extension motion with the machine's ejection motion. This is usually one of the biggest problems when picking parts in injection molding machines. If the robot works faster than the tool's ejection motion, it loses its vacuum and drops the part.

If the robot is operated too slowly, the tool's ejection motion presses against the gripper and damages the vacuum cups and the robot's linear bearings. It may seem more costly to fit each vacuum cup with a strut, but in the long term this can lead to enormous savings by cutting maintenance costs and increasing the useful life of the gripper and robot. NB: Many types of strut for oval vacuum cups are available in a rotation-proof version to prevent rotation of the oval surface.



GPF+FB



Article no	Type	A	B	C	D	E	Material
022001	WGS-VPK Midi	10	13	11,8	17	16	Si
022002	WGS-VPK Midi	15	13	11	17	16	Si
022003	WGS-VPK Midi	20	13	10,3	17	16	Si
022004	WGS-VPK Midi	25	13	10,5	17	16	Si
022005	WGS-VPK Midi	30	13	11,5	17	16	Si
022006	WGS-VPK Midi	40	15	11,5	19	16	Si
022258	WGS-VPK Midi	10	13	11,8	17	16	PUR
022259	WGS-VPK Midi	15	13	11	17	16	PUR
022260	WGS-VPK Midi	20	13	10,3	17	16	PUR
022261	WGS-VPK Midi	25	13	10,5	17	16	PUR
022262	WGS-VPK Midi	30	13	11,5	17	16	PUR
022263	WGS-VPK Midi	40	15	11,5	19	16	PUR

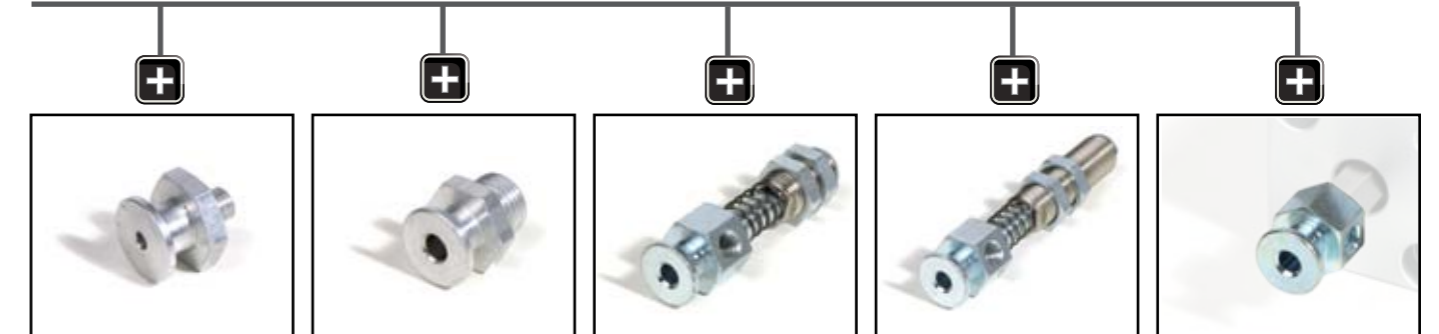
WGS-VPK Midi

Midi vacuum cup, flat type.

Sizes Ø 10-40 mm.

Material: silicone-Si or polyurethane-PUR.

Accessories



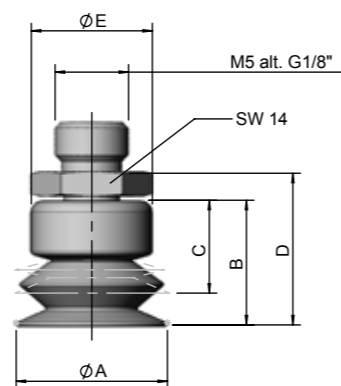
WGS-VN-M5

WGS-VN-G1/8"

WGS-FB10-M5

WGS-FB10L-M5

WGS-CN1



WGS-VBK Midi

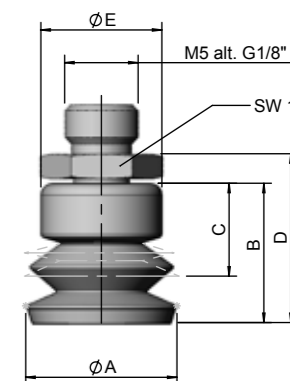
Midi vacuum cup, bellow type.
 Sizes Ø 10-40 mm.
 Material: silicone-Si or polyurethane-PUR.

Article no	Type	A	B	C	D	E	Material
022011	WGS-VBK Midi 10 Si	10	16,5	12,5	20	16	Si
022012	WGS-VBK Midi 15 Si	15	16,5	11,5	20	16	Si
022013	WGS-VBK Midi 20 Si	20	16,5	11,5	20	16	Si
022014	WGS-VBK Midi 25 Si	25	16,5	11,5	20	16	Si
022015	WGS-VBK Midi 30 Si	30	25	14,5	28,5	16	Si
022016	WGS-VBK Midi 40 Si	40	26,5	18,5	30	16	Si
022264	WGS-VBK Midi 10 PUR	10	16,5	12,5	20	16	PUR
022265	WGS-VBK Midi 15 PUR	15	16,5	11,5	20	16	PUR
022266	WGS-VBK Midi 20 PUR	20	16,5	11,5	20	16	PUR
022267	WGS-VBK Midi 25 PUR	25	16,5	11,5	20	16	PUR
022268	WGS-VBK Midi 30 PUR	30	25	14,5	28,5	16	PUR
022269	WGS-VBK Midi 40 PUR	40	26,5	18,5	30	16	PUR

Accessories



WGS-VN-M5 WGS-VN-G1/8" WGS-FB10-M5 WGS-FB10L-M5 WGS-CN1



WGS-VBK Midi-SR

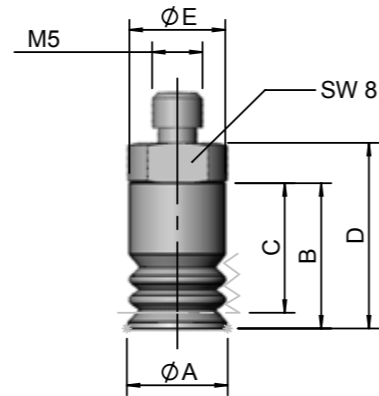
Midi vacuum cup, bellow type.
 Sizes Ø 20-40 mm.
 Material: silicone-Si.
 This type of vacuum cup has a sealing ring of soft silicone. It is used when you have a problem to establish vacuum on grooved surfaces or on other surfaces having small elevations.

Article no	Type	A	B	C	D	E	Material
022332	WGS-VBK Midi 20-SR Si	20	18,5	13	22,5	16	Silicone
022333	WGS-VBK Midi 25-SR Si	25	19	13,5	23	16	Silicone
022334	WGS-VBK Midi 30-SR Si	30	26	16	30	16	Silicone
022335	WGS-VBK Midi 40-SR Si	40	29,5	18	33,5	16	Silicone

Accessories



WGS-VN-M5 WGS-VN-G1/8" WGS-FB10-M5 WGS-FB10L-M5 WGS-CN1



WGS-VBK Mini

Mini vacuum cup, bellow type.
 Sizes Ø 05-10 mm.
 Material: silicone-Si or polyurethane-PUR.

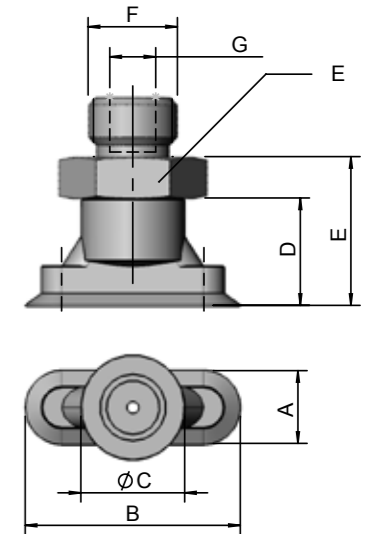
Article no	Type	A	B	C	D	E	Material
022115	WGS-VBK Mini 05 Si	5	13,5	11	17,5	7	Si
022116	WGS-VBK Mini 10 Si	10	14	10,5	18	10	Si
022117	WGS-VBK Mini 05 PUR	5	13,5	11	17,5	7	PUR
022118	WGS-VBK Mini 10 PUR	10	14	10,5	18	10	PUR

Accessories



WGS-VNM-M5 WGS-FB20-M5 WGS-FB20L-M5

NEW!



WGS-VOK

Vacuum cup, oval flat type.
 Sizes 5x15, 8x24, 15x45 mm.
 Material: silicone-Si transparent or hitemp.

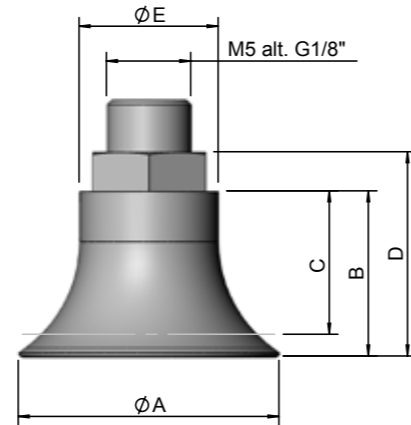
Article no	Type	A	B	C	D	E	F	G	H	Material
022019	WGS-VOK - 5x15 Si	5	15	8,6	11,7	16,7	M5	Ø 2,5	8	Si
022020	WGS-VOK - 8x24 Si	8	24	11,3	11,7	16,2	G1/8"	M5	14	Si
022021	WGS-VOK - 15x45 Si	15	45	15,5	20,5	25,5	G1/8"	M5	14	Si
022119	WGS-VOK - 5x15 Hitemp	5	15	8,6	11,7	16,7	M5	Ø 2,5	8	NBR
022120	WGS-VOK - 8x24 Hitemp	8	24	11,3	11,7	16,2	G1/8"	M5	14	NBR
022121	WGS-VOK - 15x45 Hitemp	15	45	15,5	20,5	25,5	G1/8"	M5	14	NBR

Accessories



WGS-VNO-M5 WGS-VNO-G1/8"-1 WGS-VNO-G1/8"-2 WGS-FB20 WGS-FB25-50

NEW!

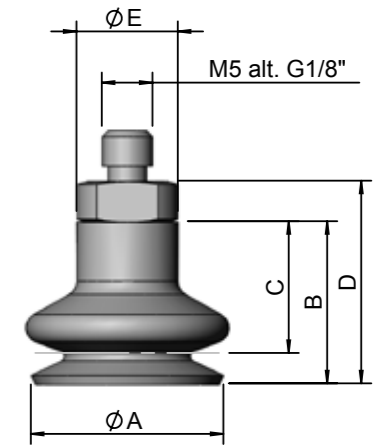


Article no	Type	A	B	C	D	E	Material
024024	WGS-VPK08-Hitemp	Ø7.5	10	8.7	14	Ø9	Hitemp
024025	WGS-VPK15-Hitemp	Ø15	11	8.7	15	Ø9	Hitemp
024026	WGS-VPK20-Hitemp	Ø20	11.5	8.5	15.5	Ø10	Hitemp
024027	WGS-VPK30-Hitemp	Ø30	19	16.5	25	Ø16	Hitemp
024028	WGS-VPK40-Hitemp	Ø40	20	17	26	Ø16	Hitemp
024029	WGS-VPK50-Hitemp	Ø50	22	17.5	28	Ø18	Hitemp

WGS-VPK-Hitemp

Special type of vacuumcup, flat type. Sizes:Ø8-50 mm
Material: Hitemp hybrid material -Hit

NEW!

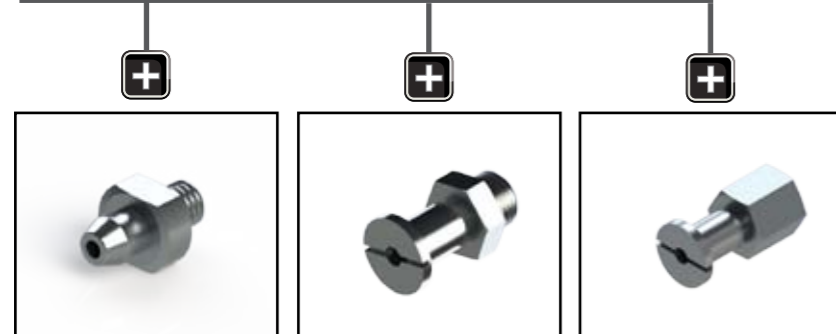


Article no	Type	A	B	C	D	E	Material
024030	WGS-VBK11-Hitemp-1.5	Ø11	16	10.5	20	Ø10	Hitemp
024031	WGS-VBK14-Hitemp-1.5	Ø13	16	11	20	Ø10	Hitemp
024032	WGS-VBK20-Hitemp-1.5	Ø19	16	11	20	Ø10	Hitemp
024033	WGS-VBK33-Hitemp-1.5	Ø33	27.5	16.5	33.5	Ø18	Hitemp
024034	WGS-VBK43-Hitemp-1.5	Ø43	28	35.5	34	Ø18	Hitemp
024035	WGS-VBK53-Hitemp-1.5	Ø53	34	23	40	Ø18	Hitemp

WGS-VBK-Hitemp 1.5

Special type of vacuumcup, 1.5 bellow type. Sizes:Ø11-53 mm
Material: Hitemp hybrid material -Hit

Accessories

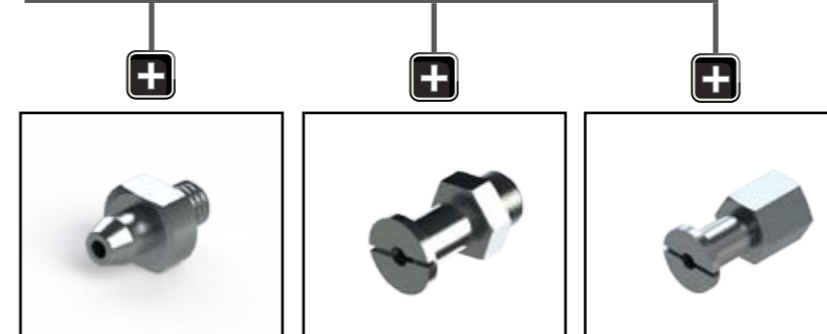


WGS-VNM-M5
For Ø 8, 15, 20

WGS-VNU-G 1/8
For Ø 30, 40, 50

WGS-VNI-G 1/8
For Ø 30, 40, 50

Accessories

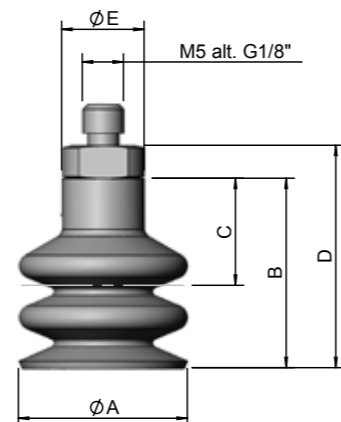


WGS-VNM-M5
For Ø 11,14, 20

WGS-VNU-G 1/8
For Ø 33, 43, 53

WGS-VNI-G 1/8
For Ø 33, 43, 53

NEW!

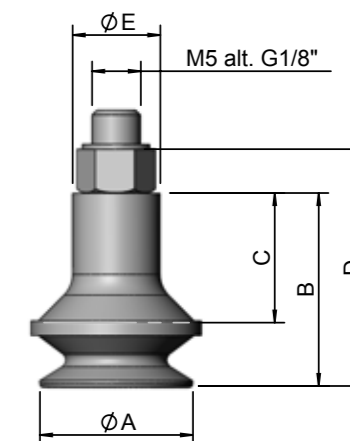


Article no	Type	A	B	C	D	E	Material
024036	WGS-VBK09-Hitemp 2.5	Ø9	15	12	19	Ø9	Hitemp
024037	WGS-VBK14-Hitemp 2.5	Ø14	23	13	27	Ø10	Hitemp
024038	WGS-VBK20-Hitemp 2.5	Ø20	23	13	27	Ø10	Hitemp
024039	WGS-VBK32-Hitemp 2.5	Ø32	37.5	23	43.5	Ø18	Hitemp
024040	WGS-VBK42-Hitemp 2.5	Ø42	46	24	52	Ø18	Hitemp
024041	WGS-VBK52-Hitemp 2.5	Ø52	49	22	55	Ø18	Hitemp

WGS-VBK-Hitemp 2.5

Special type of vacuumcup,
2.5 bellow type. Sizes:Ø11-53 mm
Material: Hitemp hybrid material -Hit

NEW!

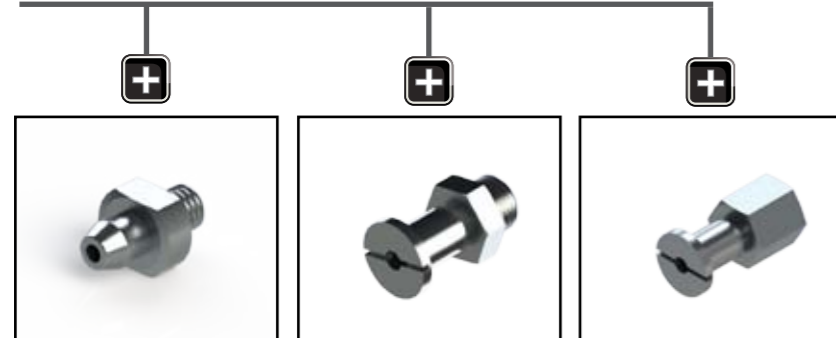


Article no	Type	A	B	C	D	Material
024046	WGS-VBK05-PI-SI1.5	Ø5.6	9.2	7.7	12.7	Silicone
024047	WGS-VBK08-PI-SI1.5	Ø8.8	11.9	8.4	15.4	Silicone
024048	WGS-VBK10-PI-SI1.5	Ø11	16.4	11.9	21.4	Silicone
024049	WGS-VBK15-PI-SI1.5	Ø15.7	19.8	13.3	24.8	Silicone
024050	WGS-VBK20-PI-SI1.5	Ø22	19	9	24	Silicone
024051	WGS-VBK30-PI-SI1.5	Ø34	26.2	11.2	33.5	Silicone
024052	WGS-VBK40-PI-SI1.5	Ø43	28	16	36	Silicone
024053	WGS-VBK50-PI-SI1.5	Ø53	35.3	16.3	44.3	Silicone

WGS-VBK-PI-SI 1.5

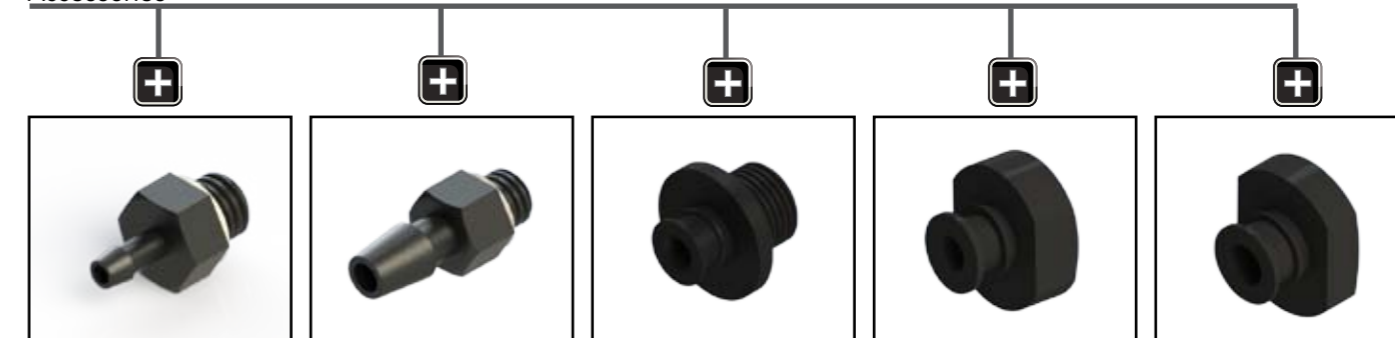
Special type of vacuumcup,
1.5 bellow type. Sizes:Ø5-50 mm
Material: Silicone -Si

Accessories



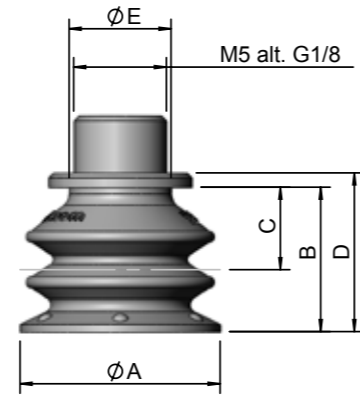
WGS-VNM-M5 For Ø 9, 14, 20
WGS-VNU-G 1/8 For Ø 32, 43, 53
WGS-VNI-G 1/8 For Ø 32, 43, 53

Accessories



WGS-VNU-M5-PI1 For Ø 5,8
WGS-VNU-M5-PI2 For Ø 10, 15
WGS-VNU-G1/8-PI1 For Ø 20
WGS-VNI-G1/8-PI1 For Ø 30, 40
WGS-VNI-G1/8-PI3 For Ø 50

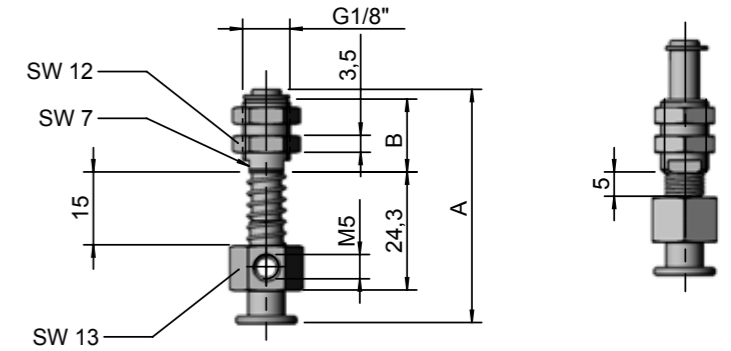
NEW!



Article no	Type	A	B	C	D	Material
024054	WGS-VBK10-PI-PU2.5	Ø11	16.5	12	21	PU2K
024055	WGS-VBK15-PI-PU2.5	Ø16	18.5	13	23	PU2K
024056	WGS-VBK20-PI-PU2.5	Ø21	15.2	8.7	16.7	PU2K
024057	WGS-VBK35-PI-PU2.5	Ø37	26.8	12.8	34.8	PU2K
024058	WGS-VBK52-PI-PU2.5	Ø53	39	20	48	PU2K

WGS-VBK-PI-PU 2.5

Special type of vacuumcup,
2.5 bellow type. Sizes:Ø10-52 mm
Material: two componets Polyurethane











WGS-FB10, WGS-FB10L









Suspension for vacuum cups of miditype. Short total length.
With integrated nipple. Available with short alt. long fixing part.

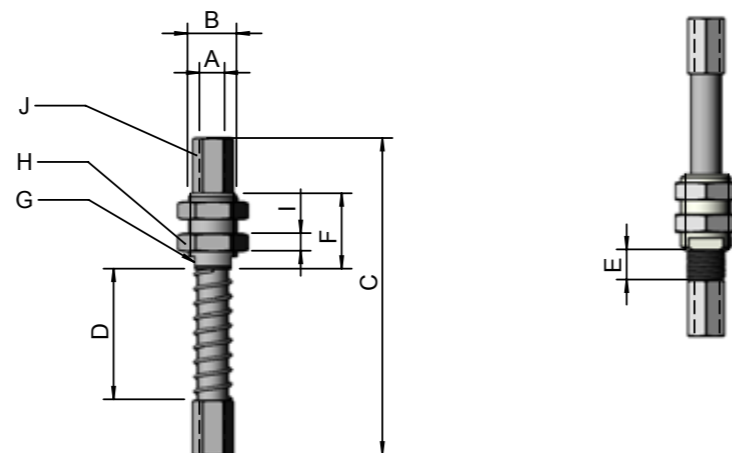
Article no	Type	Stroke	A	B	Weight
022070	WGS-FB10-M5	10	48	15	28 g
022286	WGS-FB10L-M5	10	65	32	34 g
Material	Steel, brass				

Accessories

- 

 WGS-VNU-M5-PI2
 For Ø 10, 15
- 

 WGS-VNU-G1/8-PI2
 For Ø 20
- 

 WGS-VNI-G1/8-PI2
 For Ø 35
- 

 WGS-VNI-G1/8-PI3
 For Ø 52

Accessories

- 

 WGS-GPF-G1/8
- 

 WGS-FBL1-G1/8"
- 

 WGS-VF-G1/8"
- 

 WGS-GPPF

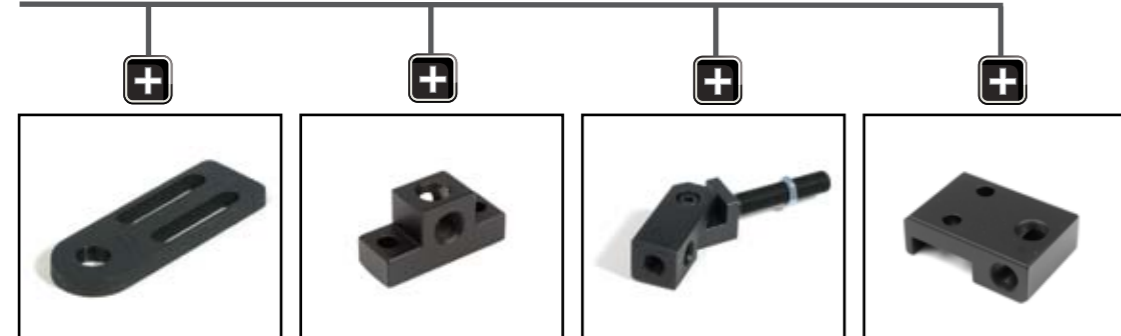


WGS-FB20, -FB20L

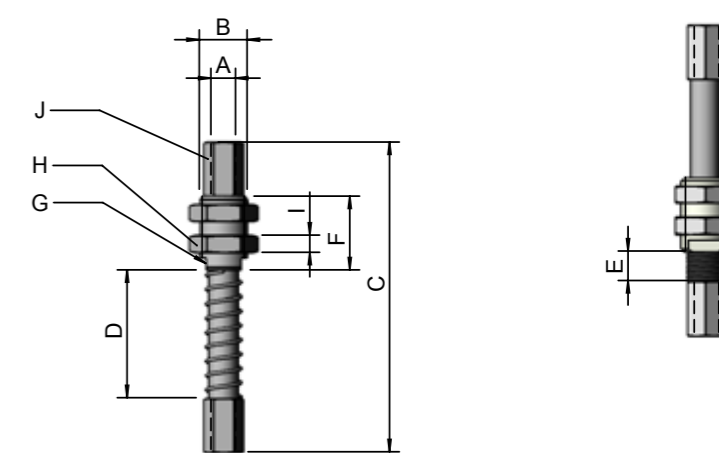
Suspension for all types of vacuum cups.
 With internal thread M5 in top and bottom.
 Stroke 20 mm.
 Available for non rotating function for oval vacuum cups.

Article no	Type	Stroke	A	B	C	D	E	F	G	H	I	J	Weight	Note
022028	WGS-FB20-M5	20	M5	G1/8"	63	26	6	15	7	12	3,5	7	23 g	
022110	WGS-FBVS20-M5	20	M5	G1/8"	63	26	6	15	7	12	3,5	7	23 g	Non-rotating
022295	WGS-FB20L-M5	20	M5	G1/8"	78	26	6	31	7	12	3,5	7	28 g	
022296	WGS-FBVS20L-M5	20	M5	G1/8"	78	26	6	31	7	12	3,5	7	28 g	Non-rotating
Material	Steel, brass													

Accessories



WGS-GPF1-G1/8 WGS-FBL-G1/8 WGS-VF-G1/8 WGS-GPPF

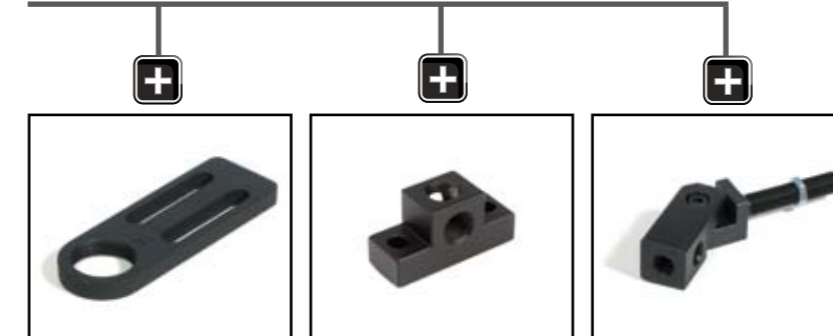


WGS-FB25-50

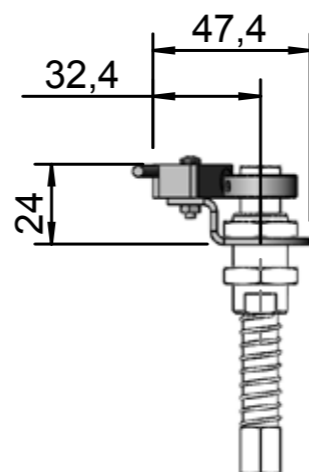
Suspension for all types of vacuum cups.
 With internal thread G1/8 in top and bottom.
 Strokes from 25-50 mm.
 Available for non rotating function for oval vacuum cups.

Article no	Type	Stroke	A	B	C	D	E	F	G	H	I	J	Weight	Note
022029	WGS-FB25-G1/8"	25	G1/8"	M16x1	92	34	9	30	13	22	5	12	100 g	
022031	WGS-FBVS25-G1/8"	25	G1/8"	M16x1	92	34	9	30	13	22	5	12	100 g	Non-rotating
022030	WGS-FB50-G1/8"	50	G1/8"	M16x1	122	64	14	30	13	22	5	12	112 g	
022087	WGS-FBVS50-G1/8"	50	G1/8"	M16x1	122	64	14	30	13	22	5	12	112 g	Non-rotating
Material	Steel, brass													

Accessories



WGS-GPF1-M16x1 WGS-FBL-M16x1 WGS-VF-M16x1



Article no	022306
Type	WGS-STG1
Switch type	Inductive Sensors
Switch logic	Normally open
Operation voltage	10-36 VDC
Switching current	200 mA max
LED indicator	Provided = Red
Enclosure classification	IP67
Cable connection	3-wire PVC, Length 2 m, Blue - Brown +, Black Signal
Material	Steel

WGS-STG1

Sensorkit for direct assembly on to the suspension.

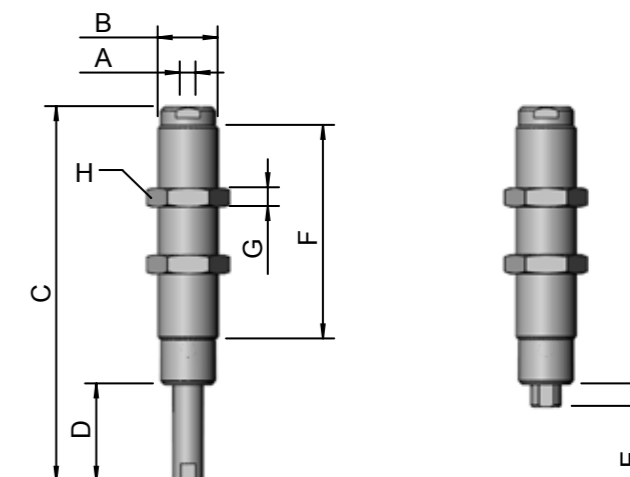
Fits on WGS-FB25, WGS-FBVS25, WGS-FB50 och WGS-FBVS50

Accessories



WGS-FB25-50

NEW!



**WGS-TIFB20-M5
WGS-TIFB30-G1/8**

Suspension with telescopic stroke and internal spring for all types of vacuum cups. With internal thread M5 or G1/8 in top and bottom.

Strokes 20 or 30 mm.

Article no	Type	Stroke	A	B	C	D	E	F	G	H	Weight
024013	WGS-TIFB20-M5	20	M5	M16x1,0	100	26	6	57	5	19	35 g
024014	WGS-TIFB30-G1/8	30	G1/8"	M22x1,5	130	36	6	75	6	27	80 g

Accessories



WGS-GPF1-G1/8



WGS-FBL-G1/8

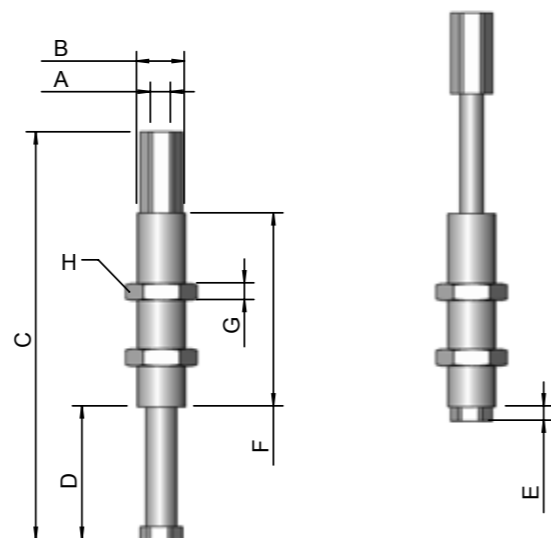


WGS-VF-G1/8



WGS-GPPF

NEW!

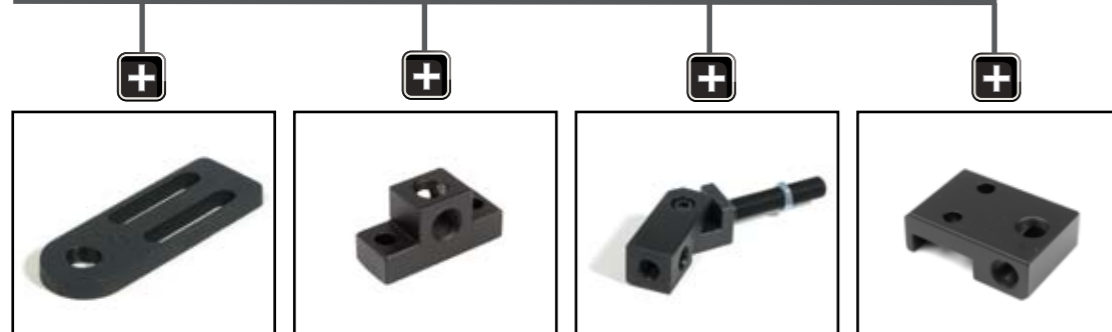


WGS-IFB25-M5
WGS-IFB20-G1/8
WGS-IFB35-G1/8

Suspension with internal spring for all types of vacuum cups.
 With internal thread M5 or G1/8 in top and bottom.
 Strokes 20, 25 or 35 mm.

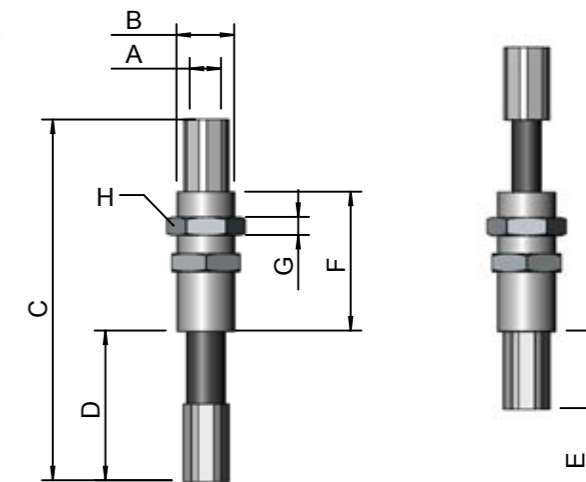
Article no	Type	Stroke	A	B	C	D	E	F	G	H	Weight
024015	WGS-IFB25-M5	25	M5	M10x1.0	85.5	28	3	40.5	3.5	13	16g
024016	WGS-IFB20-G1/8	20	G1/8"	M16x1.0	92.5	34	14	38.5	5	19	40g
024017	WGS-IFB35-G1/8	35	G1/8"	M16x1.0	127.5	49	14	58.5	5	19	50g

Accessories



WGS-GPF1-G1/8 WGS-FBL-G1/8 WGS-VF-G1/8 WGS-GPPF

NEW!

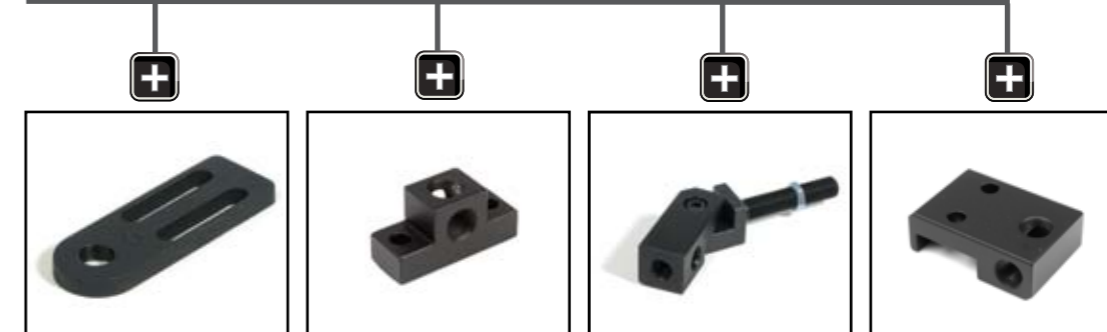


WGS-IFBV25-M5
WGS-IFBV20-G1/8
WGS-IFBV35-G1/8

Suspension for non rotating function with internal spring for all types of vacuum cups.
 With internal thread M5 or G1/8 in top and bottom.
 Strokes 20, 25 or 35 mm.

Article no	Type	Stroke	A	B	C	D	E	F	G	H	Weight	Note
024018	WGS-IFBV-25-M5	25	M5	M10x1.0	90.5	33	8	40.5	3.5	13	16g	Non-rotating
024019	WGS-IFBV-20-G1/8	20	G1/8"	M16x1.0	100	41.5	21.5	38.5	5	19	40g	Non-rotating
024020	WGS-IFBV-35-G1/8	35	G1/8"	M16x1.0	135	56.5	21.5	58.5	5	19	50g	Non-rotating

Accessories



WGS-GPF1-G1/8 WGS-FBL-G1/8 WGS-VF-G1/8 WGS-GPPF



About WGS grippers and cylinders

Grippers are normally used to pick sprues, but are often also used for parts picking, especially when the surfaces of the parts are not flat enough to use vacuum cups. Gripping pliers have the additional advantage that they can grip inside the part, pushing their jaws outwards.

The gripper can be activated via a compressed air circuit for closure (single-acting). In this case, the opening action is activated by a spring return. However, double-acting grippers are the most common solution. One compressed air circuit closes them, and another compressed air circuit opens them. This is the safest method, as the other compressed air circuit forces the grippers to open. Gripping pliers fall into two main categories:

Angle grippers

The most common type of gripper. Where, an integrated cylinder performs the gripper claw action in an arc-shaped movement.

This type of gripper is suitable for sprue picking, as it has a relatively strong pinch force. These grippers come in two variants

with integrated jaws (WGS-GDV2), and with a gripper sensor (WGS-GDV3). These two grippers have by far the strongest pinch force. The new type of grippers GDV3, GDV4, and GDV5 are new compact grippers for use when it needs small dimensions of the EOAT. Grippers with separately mounted jaws can be a good solution if you want to modify the jaws' design (WGS-GDV1). Jaws available with grooved surface (WGS-GKV1), or flat surface if you want to create your own design (WGS-GKV2).



Parallel grippers

WGS-GDP grippers are usually used when you need to grip parts with high precision, or if there is limited space for the gripper claws' movement. With this type of gripper, the claws have a parallel movement, which takes up less space than the arc-shaped movement of an angle gripper. For this type of gripper, basic components are available for WGS-GKP jaws that can easily be adapted to the surface to be gripped. The new type of high precision grippers GDP2, GDP3 and GDP4 is usually used for applications where maximum precision is required, for instance if parts are to be inserted into the tool to be overmoulded. This type of grippers is available in double-acting function.



Linear cylinder

WGS-LC2020, used for ensuring optimum control of the vacuum cup's movement, for instance if you need to grip a surface crosswise the part. You can either mount a vacuum cup with a nipple specially adapted for mounting on the torsionally resistant WGS-CN1 piston rod or, if you need greater lifting power, you can use a WGS-FRP1 front plate for two vacuum cups. Certain applications require internal gripping. In this case, a gripper plate can be mounted on the WGS-TP1 piston rod. This solution can also be used for external gripping when the parts are relatively large. A gripper sensor can be mounted on the grippers to check that the part has been gripped.



Overview Grippers and cylinders

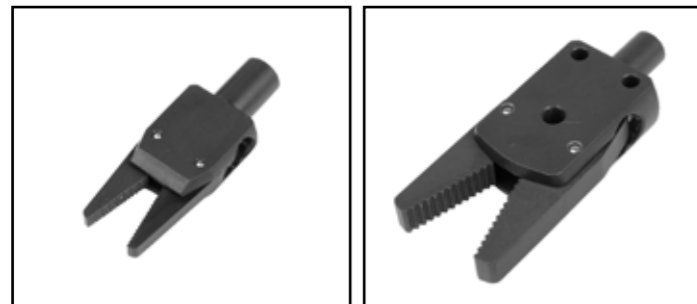
Angle grippers



GDV1

GDV2

GDV3



GDV4

GDV5

Parallell grippers



GDP1

GDP2

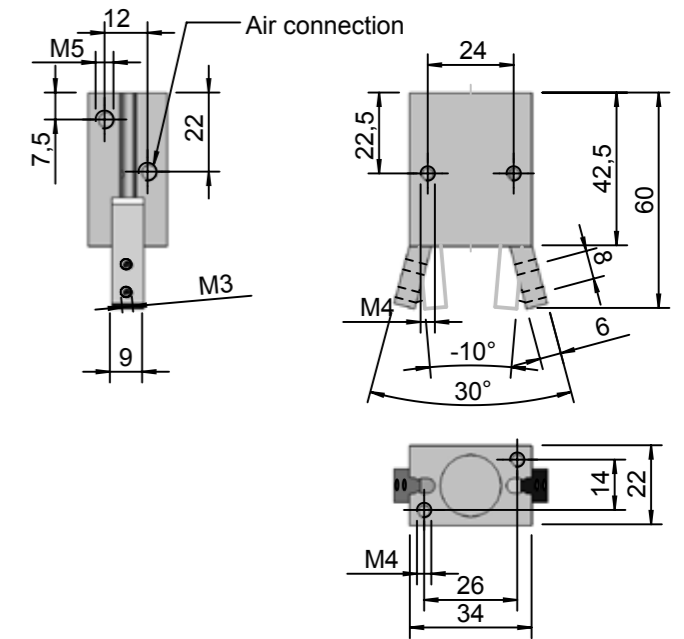
GDP3

GDP4

Cylinders



LC2020+FRP1

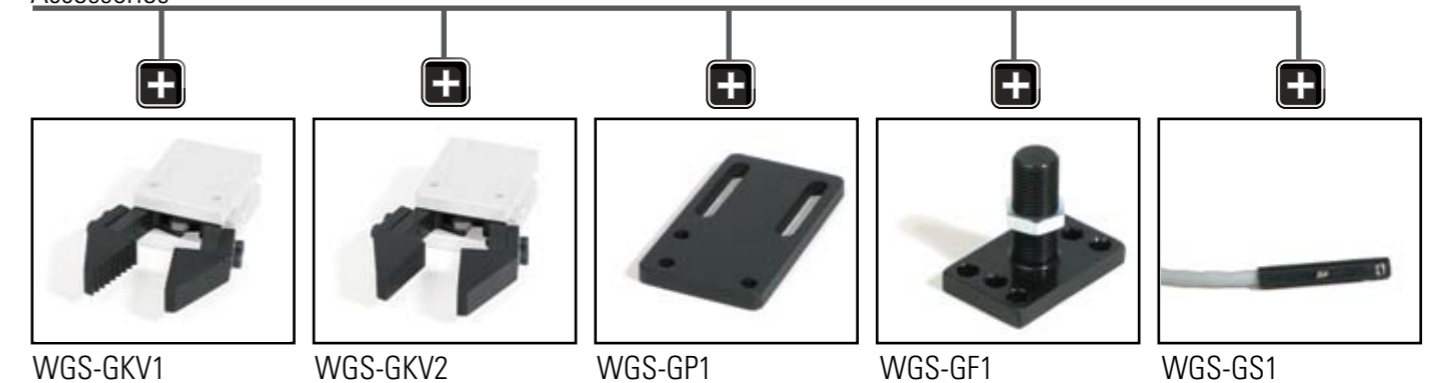


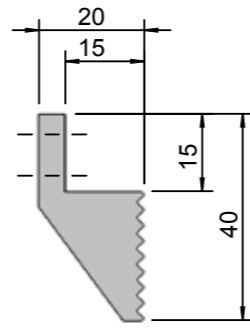
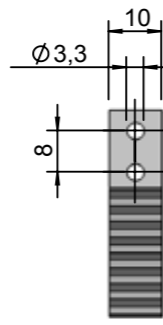
Article no	022122
Type	WGS-GDV1
Function	Single acting type, normally open
Air connection	M5
Weight	96 g
Gripping force	(5 Bar) 10 N
Pressure range	2-7 Bar

WGS-GDV1

2 finger gripper with angle movement. Single acting type with high clamp forces. Double acting type available at request. Magnetic piston for indication of position.

Accessories

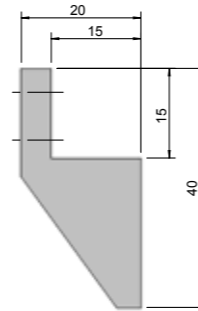
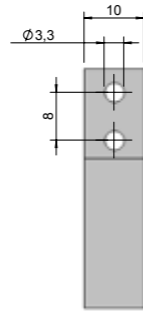




Article no	022123
Type	WGS-GKV1
Material	Aluminium
Surface treatment	Anodized black
Weight	20 g/pair
Incl screw M3x10 and washer	

WGS-GKV1

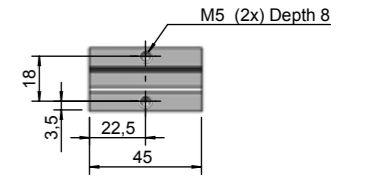
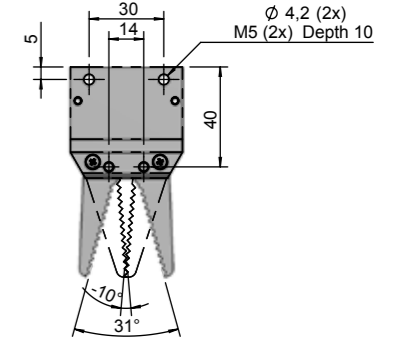
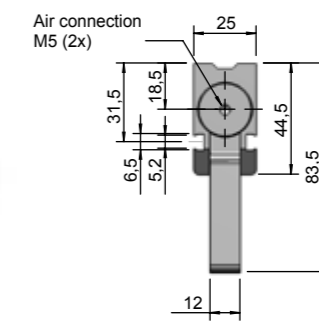
Fingers with grooves for picking sprues.
Fits for WGS-GDV1.



Article no	022272
Type	WGS-GKV2
Material	Aluminium
Surface treatment	Anodized black
Weight	20 g/pair
Incl screw M3x10 and washer	

WGS-GKV2

Plane fingers for gripping parts.
Fits for WGS-GDV1.



Article no	024068
Type	WGS-GDV2
Material	Aluminium
Surface treatment	Anodized black
Weight	115 g

WGS-GDV2

Gripper with integrated fingers.
Single acting type with high clamp forces.
Magnetic piston for indication of position.

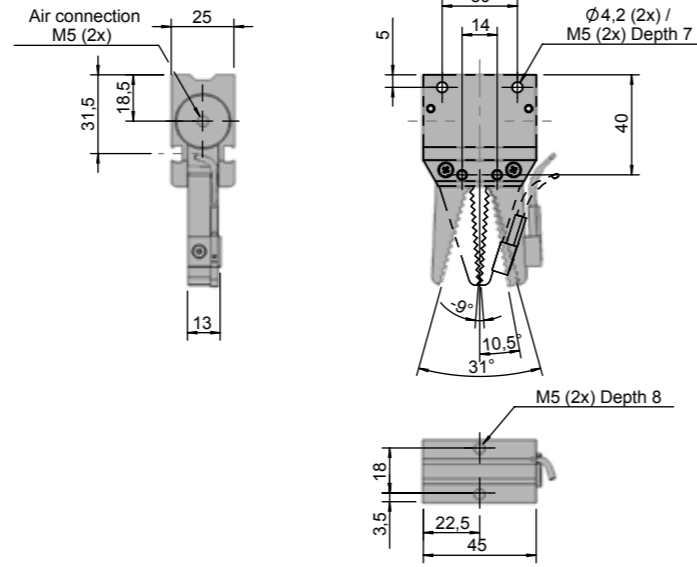
Accessories



WGS-GP2

WGS-GF2

WGS-GS2

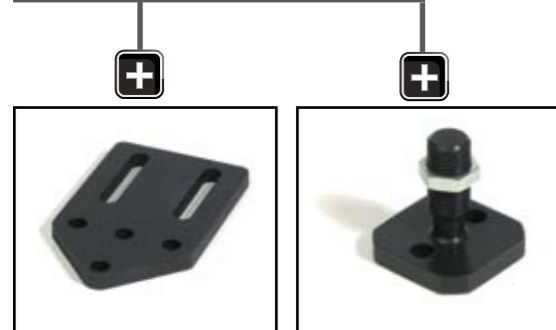


Article no	024069
Typ	WGS-GDV3
Material	Aluminium
Surface treatment	Anodized black
Weight	120 g

WGS-GDV3

Gripper with integrated fingers and sensor.
Single acting type with high clamp forces.
Magnetic piston for indication of position.

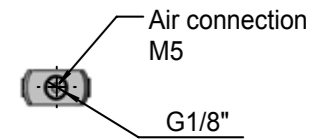
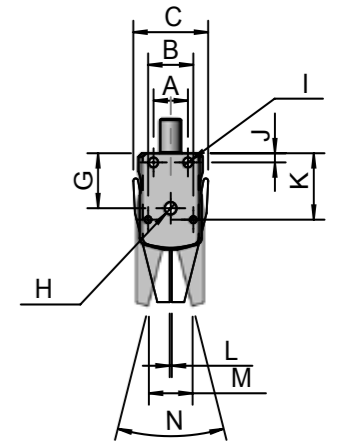
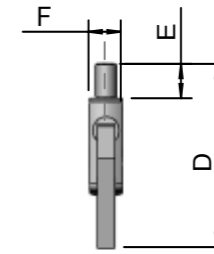
Accessories



WGS-GP2

WGS-GF2

NEW!

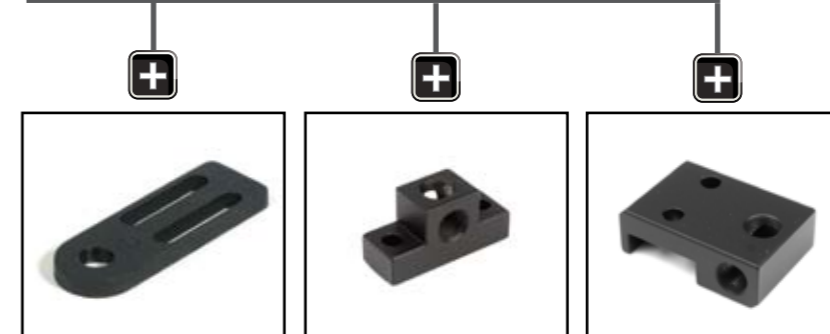


WGS-GDV4,-GDV5

Grippers with integrated fingers and compact dimensions.
Single acting type with high clamp forces.

Article no	Type	A	B	C	D	E	F	G	H	I	J	K	L	M	N	Weight
024003	WGS-GDV4	-	12	20.6	55.5	15	10	-	-	-	-	16,4	1	9,5	20,7°	15 g
024004	WGS-GDV5	16	21	34.8	80	15	15	24	Ø5,5	Ø4,3	4	29	1	20,3	30°	50 g

Accessories

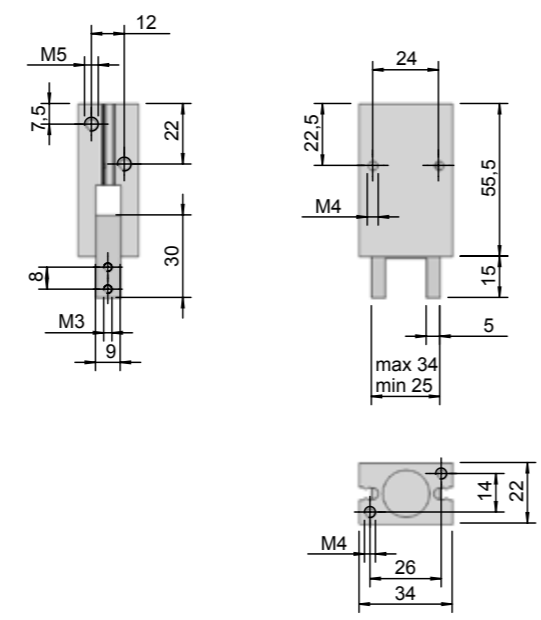


WGS-GPF1-G1/8

WGS-FBL1

WGS-GPPF G1/8

WGS-GPF2-G1/8

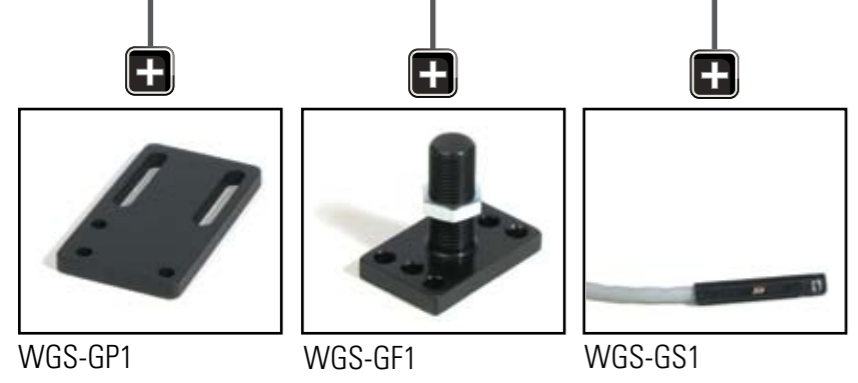


WGS-GDP1

2 finger gripper with parallel movement. Intergrated linear guides. Double acting type with high clamp force. Single acting type available on request. Magnetic piston for indication of position.

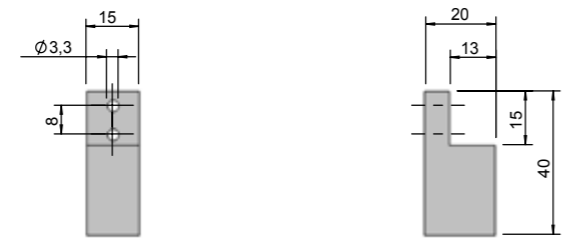
Article no	022024
Type	WGS-GDP1
Function	Double acting type
Air connection	M5
Weight	120 g
Gripping force, opened	(5 bar) 18 N
Gripping force, closed	(5 bar) 24 N
Pressure range	2-7 Bar

Accessories

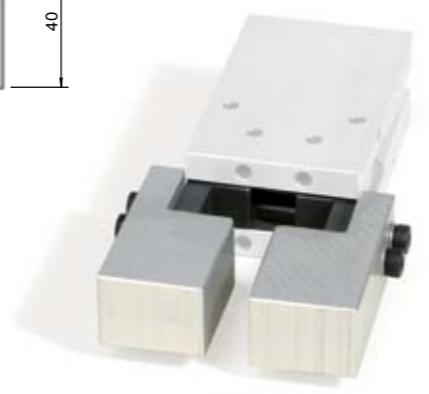


WGS-GKP1

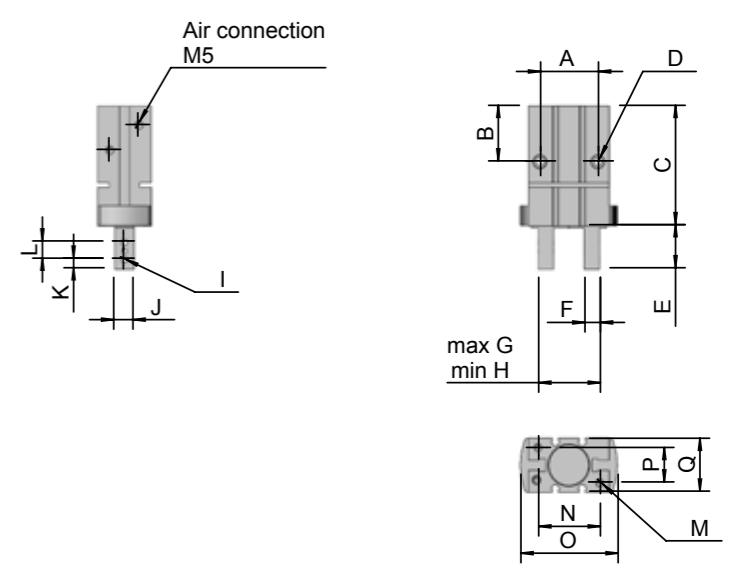
Fingers in anodized aluminum for customized applications. Fits for WGS-GDP1.



Artikelnr	022148
Typ	WGS-GKP1
Material	Aluminium
Surface treatment	Anodized
Weight	48 g/pair
Incl screw M3x10 and washer	



NEW!

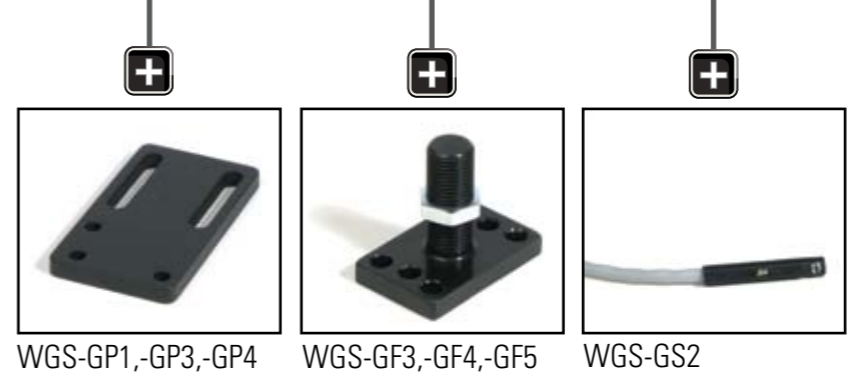


WGS-GDP2, -GDP3, -GDP4

2 finger grippers with parallel movement. This range of grippers is used for applications where maximum precision is required. Magnetic piston for indication of position.

Article no	Type	A	B	C	D	E	F	G	H	I	J	K	L	M	N	O	P	Q	Weight
024006	WGS-GDP2	24	24,5	50	M4	17,3	5	31,5	24,7	M3	8	4	7	M4	22	38,6	15	23,6	98 g
024007	WGS-GDP3	30	29	62,3	M5	22,5	8	42,4	32	M3	10	5	9	M5	32	50,4	18	27,6	207 g
024008	WGS-GDP4	36	30	74,6	M6	28,1	10	53,2	38,8	M5	12	6	12	M6	40	64	22	33,6	365 g

Accessories





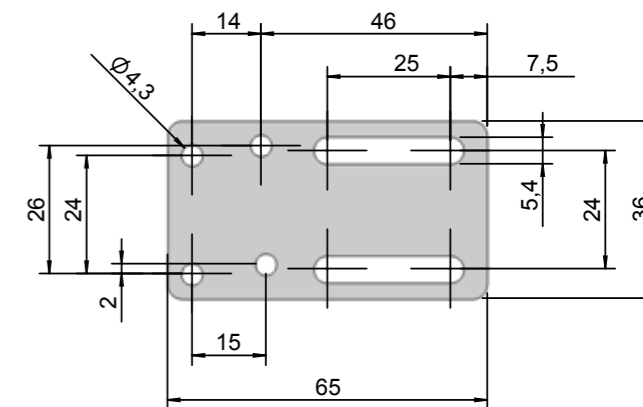
WGS-GS1

Sensor for gripper WGS-GDV1, WGS-GDP.

WGS-GS2

Sensor for gripper WGS-GDV2, WGS-GDP2, WGS-GDP3, WGS-GDP4.

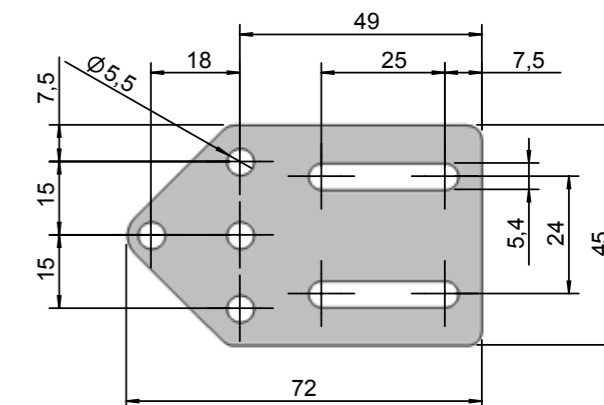
Article no	022139	022294
Type	WGS-GS1	WGS-GS2
Switch type	Reed switch	Reed switch
Switch logic	Normally open	Normally open
Operation voltage	3-50 VDC, 90-120 VAC, 50/60 Hz	3-50 VDC, 90-120 VAC, 50/60 Hz
Switching current	50 mA max	50 mA max
LED indicator	Provided = Red	Provided = Red
Enclosure classification	IP67	IP67
Cable connection	2-wire PUR, Length 3m, Blue - Brown +	2-wire PUR, Length 3m, Blue - Brown +



Article no	022127
Type	WGS-GP1
Material	Aluminium
Thickness	5 mm
Surface treatment	Anodized black
Weight	27 g
Incl screw M4x10 and washer	

WGS-GP1

Gripper plate for side assembly of grippers. Fits for WGS-GDV1 and WGS-GDP1.

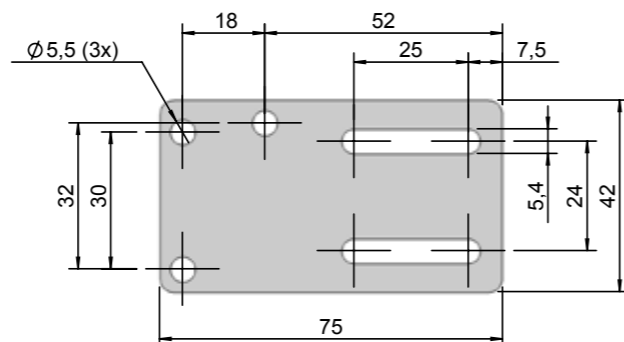


Article no	022300
Type	WGS-GP2
Material	Aluminium
Thickness	5 mm
Surface treatment	Anodized black
Weight	38 g
Incl screw M5x10 and washer	

WGS-GP2

Gripper plate for side assembly of grippers. Fits for WGS-GDV2 and WGS-GDV3.

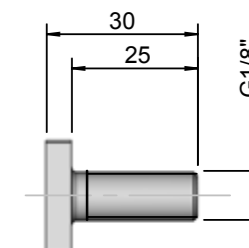
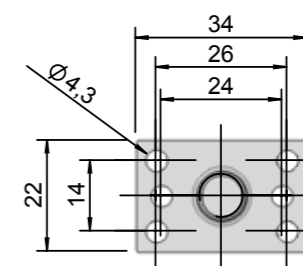
NEW!



Article no	022409
Type	WGS-GP3
Material	Aluminium
Surface treatment	Anodized black
Weight	37 g
Incl screw M5x10 and washer	

WGS-GP3

Gripper plate for side assembly of grippers. Fits for WGS- GDP3.

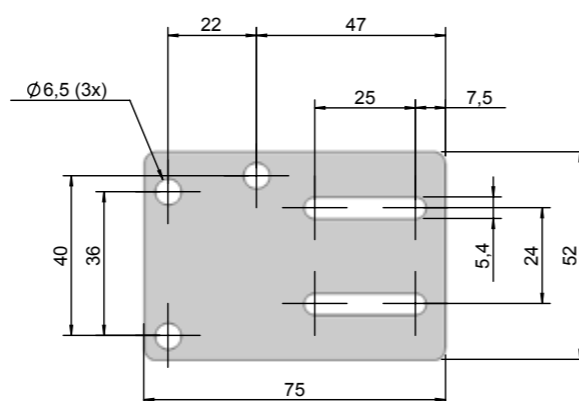


Article no	022152
Type	WGS-GF1
Material	Aluminium
Surface treatment	Anodized black
Weight	14 g
Incl WGS-LM-G1/8", screw M4x10 and washer	

WGS-GF1

Gripper plate for top side assembly of grippers. Fits for WGS-GDV1 and WGS-GDP1.

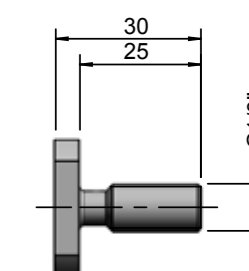
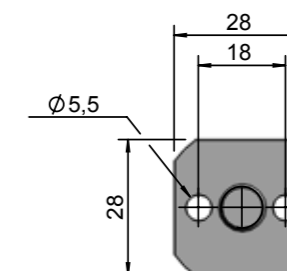
NEW!



Article no	022410
Type	WGS-GP4
Material	Aluminium
Surface treatment	Anodized black
Weight	46 g
Incl screw M6x10 and washer	

WGS-GP4

Gripper plate for side assembly of grippers. Fits for WGS- GDP4.

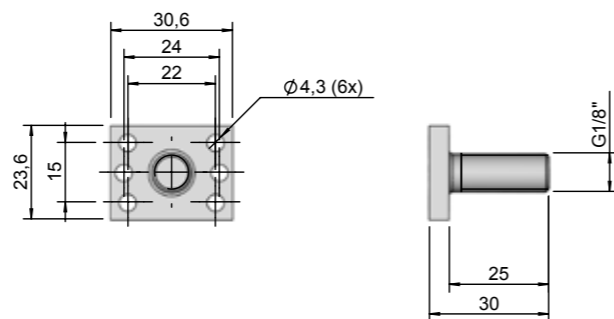


Article no	022302
Type	WGS-GF2
Material	Aluminium
Surface treatment	Anodized black
Weight	24 g
Incl WGS-LM-G1/8", screw M5x10 and washer	

WGS-GF2

Gripper plate for top side assembly of grippers. Fits for WGS-GDV2 and WGS-GDV3.

NEW!

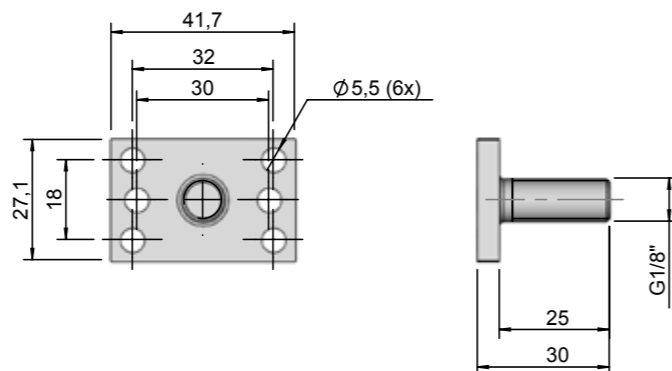


Article no	022406
Type	WGS-GF3
Material	Aluminium
Surface treatment	Anodized black
Weight	14 g
Incl WGS-LM-G1/8", screw M4x10 and washer	

WGS-GF3

Gripper plate for top side assembly of grippers.
Fits for WGS-GDP3.

NEW!

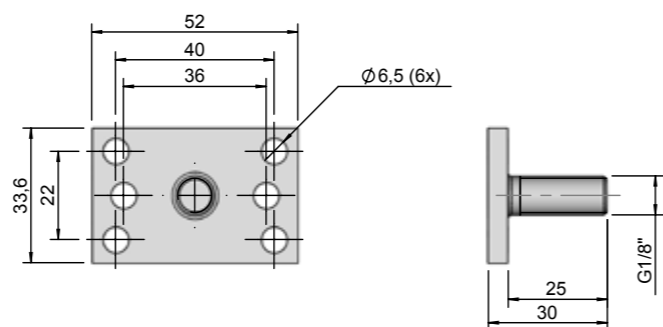


Article no	022407
Type	WGS-GF4
Material	Aluminium
Surface treatment	Anodized black
Weight	19 g
Incl WGS-LM-G1/8", screw M5x10 and washer	

WGS-GF4

Gripper plate for top side assembly of grippers.
Fits for WGS-GDP4.

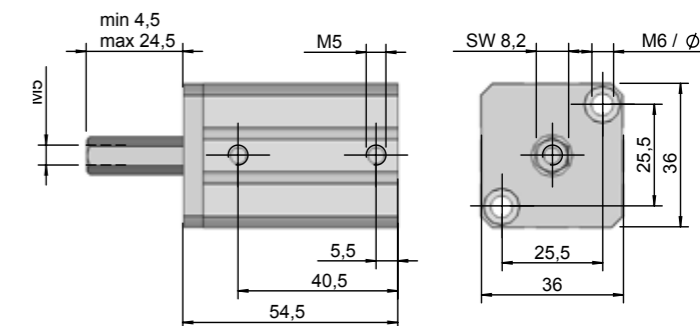
NEW!



Article no	022408
Type	WGS-GF5
Material	Aluminium
Surface treatment	Anodized black
Weight	26 g
Incl WGS-LM-G1/8", screw M6x10 and washer	

WGS-GF5

Gripper plate for top side assembly of grippers.
Fits for WGS-GDP5.

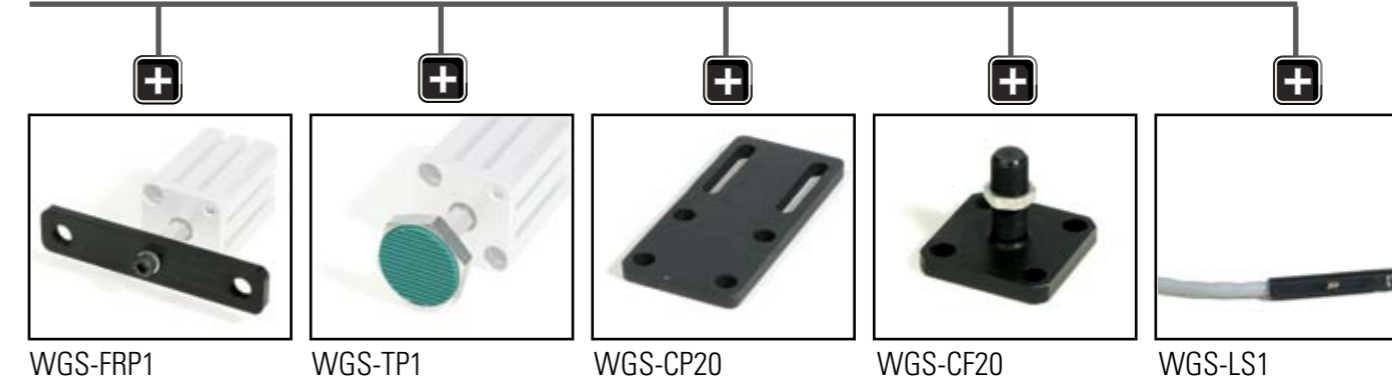


Article no	022111
Type	WGS-LC20-20
Function	Double acting type, non-rotating
Air connection	M5
Weight	163 g
Gripping force, in	(5 Bar) 128 N
Gripping force, out	(5 Bar) 157 N
Pressure range	2-7 Bar

WGS-LC20-20

Double acting linear cylinder for clamping movements.
Non rotating piston.

Accessories



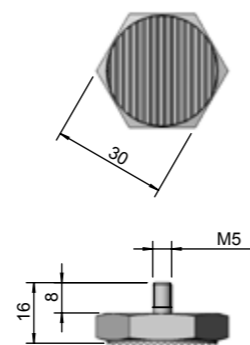
WGS-FRP1

WGS-TP1

WGS-CP20

WGS-CF20

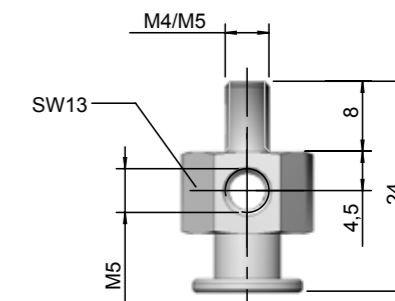
WGS-LS1



Article no	022150
Type	WGS-TP1
Material	Steel, rubber
Surface treatment	Zinc plated
Weight	39 g

WGS-TP1

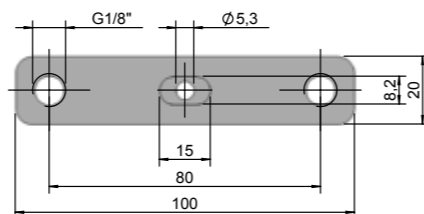
Gripper plate with high friction surface for linear cylinder.



Article no	022325	022309
Type	WGS-CN1-M4	WGS-CN1-M5
Material	Steel	Steel
Weight	12 g	12 g

WGS-CN1

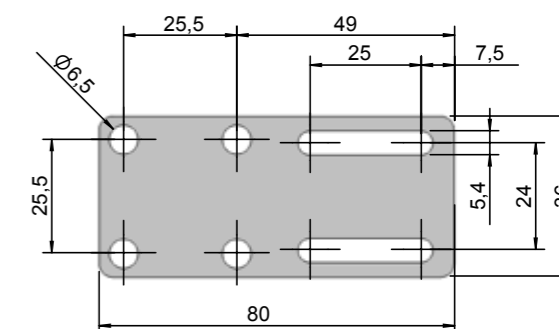
Nipple for linear cylinder for attachment to suction cups midi.



Article no	022125
Type	WGS-FRP1
Material	Aluminium
Thickness	5 mm
Surface treatment	Anodized black
Weight	24 g
Incl screw M5x10 and washer	

WGS-FRP1

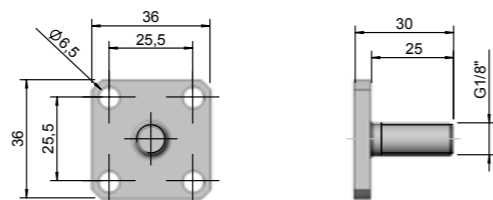
Front adapter for linear cylinder for assembly with suction cups.



Article no	022128
Type	WGS-CP20
Material	Aluminium
Thickness	5 mm
Surface treatment	Anodized black
Weight	33 g
Incl screw M6x20 and washer	

WGS-CP20

Cylinder plate for side assembly.



Article no	022156
Type	WGS-CF20
Material	Aluminium
Surface treatment	Anodized black
Weight	20 g
Incl WGS-LM-G1/8", screw M6x20 and washer	

WGS-CF20

Cylinder plate for top side assembly of linear cylinder.



Article no	022126
Type	WGS-LS1
Switch type	Sourcing output
Switch logic	Normally open
Operation voltage	10-28 VDC
Switching current	50 mA max
LED indicator	Provided = Red
Enclosure classification	IP67
Cable connection	3-wire vinyl, Length 3m, Blue - Brown + Black output

WGS-LS1

Sensor for linear cylinder WGS-LC20-20.

Different types of coupling parts for WGS Grip System

For the application of vacuum cups, grippers, linear cylinders and air nippers, a wide variety of coupling parts are available that are adapted for connection to the WGS profiles. These can be combined in many different ways.



GPF+FLR



GP1



FBL+ND



FBL+GF2



GPF



GPF+VA



GPF+VF



FBL



GPF+FB



FBL+FB



FBL+VF



GP1



CP20



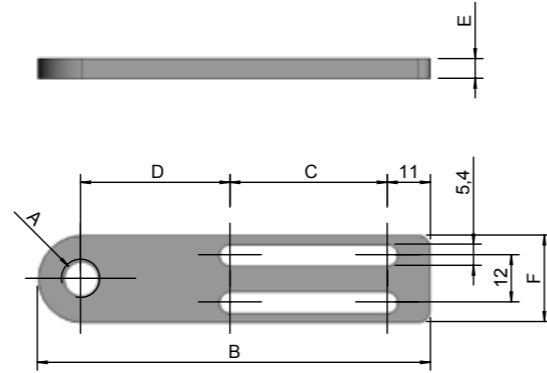
GPPF



GPF+JFI



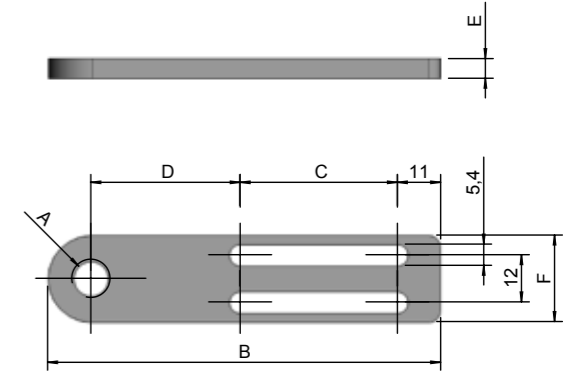
GPF



Article no	Type	A	B	C	D	E	F	Weight
022040	WGS-GPF1-G1/8"	G1/8"	65	25	18	5	22	14 g
022421	WGS-GPF1-12	Ø12.5	65	25	18	5	22	14 g
022129	WGS-GPF1-M16x1	M16x1	65	25	18	5	22	12 g
022419	WGS-GPF1-M22x1.5	M22x1.5	65	20	19	5	30	14 g
Material	Aluminium							
Surface treatment	Anodized black							

WGS-GPF1

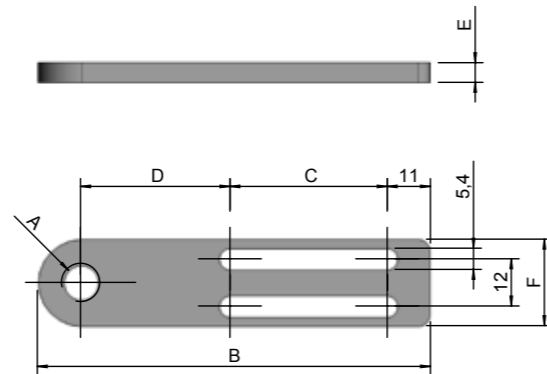
Bracket for adjustable mounting of vacuum cups, suspensions etc.



Article no	Type	A	B	C	D	E	Weight
022346	WGS-GPF3-G1/8"	G1/8"	65	25	18	8	22 g
022347	WGS-GPF3-M16x1	M16x1	65	25	18	8	19 g
Material	Aluminium						
Surface treatment	Anodized black						
Incl screw M5x12 and washer							

WGS-GPF3

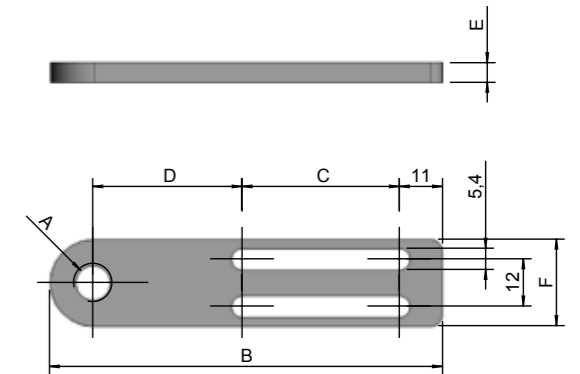
Strengthened bracket for adjustable mounting of vacuum cups, suspensions etc.



Article no	Type	A	B	C	D	E	F	Weight
022042	WGS-GPF2-G1/8"	G1/8"	100	40	38	5	22	22 g
022422	WGS-GPF2-12	Ø12.5	100	40	38	5	22	22 g
022130	WGS-GPF2-M16x1	M16x1	100	40	38	5	22	20 g
022420	WGS-GPF2-M22x1.5	M22x1.5	100	40	38	5	30	22 g
Material	Aluminium							
Surface treatment	Anodized black							

WGS-GPF2

Bracket for adjustable mounting of vacuum cups, suspensions etc.



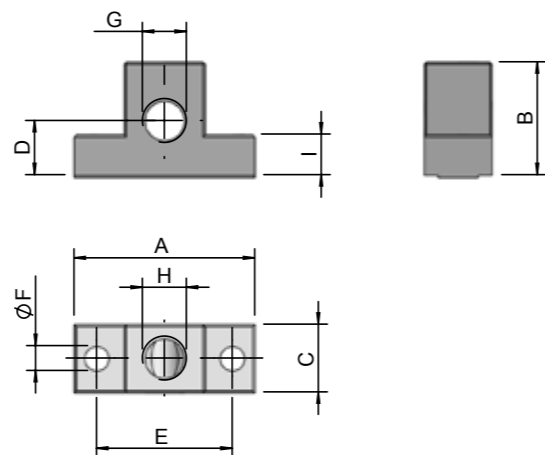
Article no	Type	A	B	C	D	E	Weight
022348	WGS-GPF4-G1/8"	G1/8"	100	40	38	8	35 g
022349	WGS-GPF4-M16x1	M16x1	100	40	38	8	32 g
Material	Aluminium						
Surface treatment	Anodized black						
Incl screw M5x12 and washer							

WGS-GPF4

Strengthened bracket for adjustable mounting of vacuum cups, suspensions etc.



NEW!

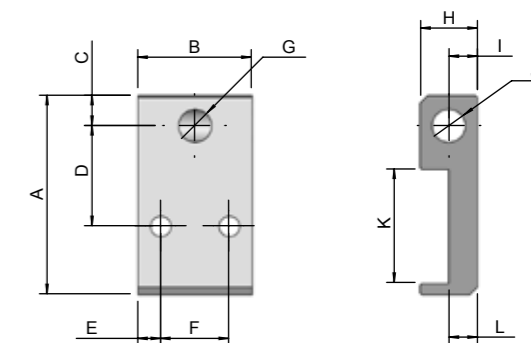


WGS-FBL1

Mounting block for side mounting of angle adjustments, spring plunger etc.

Article no	Type	A	B	C	D	E	F	G	H	I	Weight
022160	WGS-FBL1-G1/8"	40	20	15	12.5	30	Ø5,5	G1/8"	G1/8"	9	18 g
022163	WGS-FBL1-M16x1	50	25	20	14	40	Ø5,5	M16x1	-	9	35 g
022413	WGS-FBL1-M22x1.5	50	30	25	15	40	Ø5,5	M22x1.5	-	9	40 g
Material	Aluminium										
Surface treatment	Anodized black										
Incl screw M5x16 and washer											

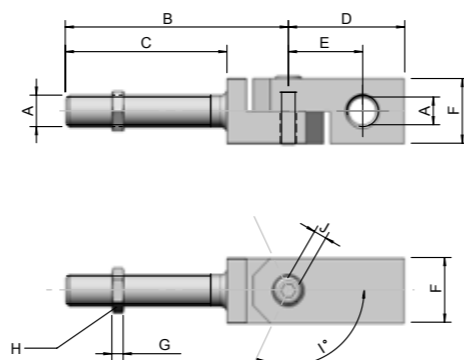
NEW!



WGS-GPPF-G1/8-22
WGS-GPPF-G1/8-30

Mounting bracket for compact assembly of vacuumcups, suspensions and grippers.

Article no	Type	A	B	C	D	E	F	G	H	I	J	K	L	Weight
022411	WGS-GPPF-G1/8"-22	44,5	30	8	22,5	6	18	G1/8"	15	7,5	G1/8"	22	7,5	33 g
022412	WGS-GPPF-G1/8"-30	52,5	30	8	26,5	6	18	G1/8"	15	7,5	G1/8"	30	7,5	38 g
Incl screw M5x12 and washer														



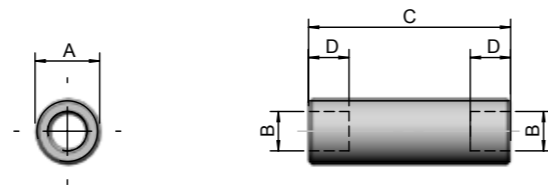
WGS-VF

Angle adjustment element for curved and different height of parts.

Article no	Type	A	B	C	D	E	F	G	H	I	J	Screw	Weight
022166	WGS-VF-G1/8"	G1/8"	69	50	36	23	20	3,5	12	115	4	M5x16	62 g
022171	WGS-VF-M16x1	M16x1	120,5	100	43,5	26	25	5	22	95	4	M5x20	240 g
Material	Aluminium												
Surface treatment	Anodized black												
Incl WGS-LM, screw and springwasher													



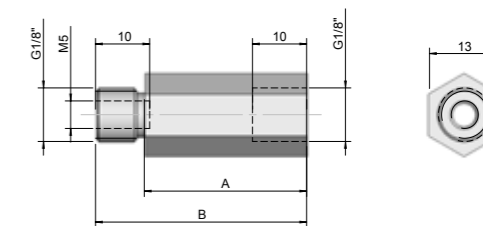
WGS-GPPF+VBK



Article no	Type	A	B	C	D	Weight
022174	WGS-FLR-30-G1/8"-M5	G1/8"	M5	30	6	5 g
022176	WGS-FLR-90-G1/8"-M5	G1/8"	M5	90	6	15 g
022178	WGS-FLR-50-M16x1-G1/8"	M16x1	G1/8"	50	10	19 g
022229	WGS-FLR-120-M16x1-G1/8"	M16x1	G1/8"	120	10	46 g
Material	Aluminium					
Surface treatment	Anodized black					
Incl WGS-LM						

WGS-FLR

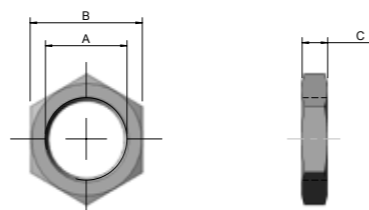
Tube för adjustment for different height of parts.
External thread G1/8" with internal M5 or external M16x1 with internal G1/8".



Article no	Type	A	B	Weight
022059	WGS-ND-20	20	29	7 g
022060	WGS-ND-30	30	39	11 g
022061	WGS-ND-40	40	49	14 g
Material	Aluminium			

WGS-ND

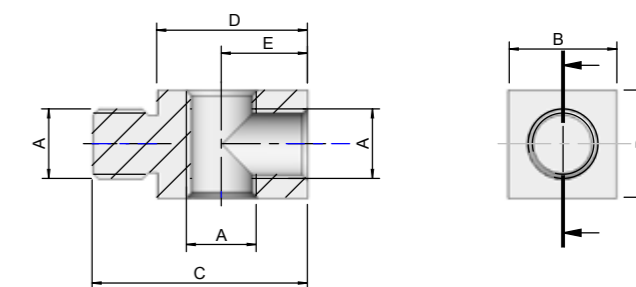
Nipple extension for different heights.



Article no	Type	A	B	C	Weight
022090	WGS-LM-G1/8"	G1/8"	12	3,5	2 g
022096	WGS-LM-M16x1	M16x1	22	5	9 g
Material	Steel				
Surface treatment	Zinc plated				

WGS-LM

Locking nut for G1/8" or M16x1.



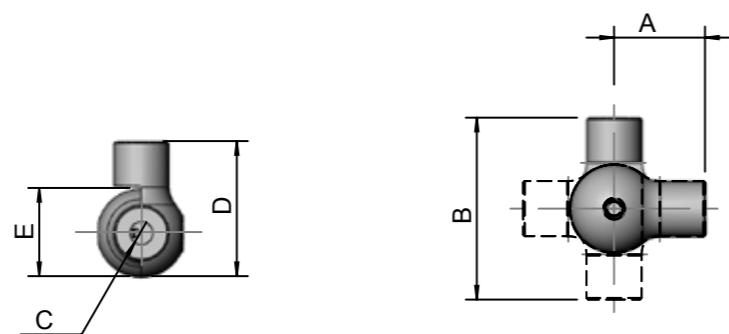
Article no	Type	A	B	C	D	E	Weight
022251	VA 3xM5	M5	10	19	13	7,5	3 g
022180	VA 3xG1/8"	G1/8"	15	30	21	12	10 g
Material	Aluminium						
Surface treatment	Anodized black						
Incl plug and sealing ring							

WGS-VA

Adapter nipple for side connection of suction cups. M5 or 1/8" thread.



NEW!



WGS-JFI-M5
WGS-JFI-G1/8

Flexible angle adjustment for curved surfaces, mounted between the vacuumcup and its support by two female threads.

By tightening a screw the angle is fixed. Possible to set the angle between 0°+/-90°.

Article no	Type	A	B	C	D	E	Weight
024009	WGS-JFI-M5	16.5	33	M5	24.5	16	10 g
024010	WGS-JFI-G1/8	21	42	G1/8"	31	20	15 g



WGS-JFI+GPF1+VBK



WGS-JFI+TIFB20+VOK



About WGS air nippers

Air nippers are usually used for cutting sprues off parts or sprue channels on hot parts. All air nippers are single-acting, meaning that only a compressed air circuit is needed to activate the cutting. The opening movement is activated by a spring return.

The air nippers can either be mounted on the robot's gripper or installed in separate peripheral equipment.

The air nippers are equipped with cutting blades available in various shapes.

Cutting blades are available with a cutting surface that is straight in relation to the air nippers (WGS KK-R), or with blades that are angled in relation to the air nippers (WGS-KK-V).

The air nippers come in three sizes and with various cutting forces. Note! Material for cutting has to be plastic parts only (not glass fiber-filled.)

Article no	Air nippers	Sprue diameter
022208	WGS-KT10	Max 4 mm
022211	WGS-KT20	Max 7 mm
022215	WGS-KT30	Max 10 mm



KTP+KT+KK-R



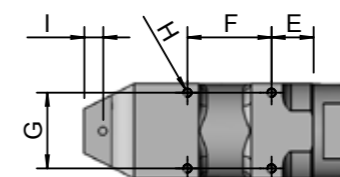
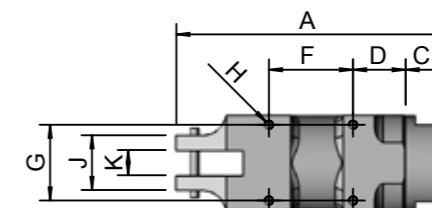
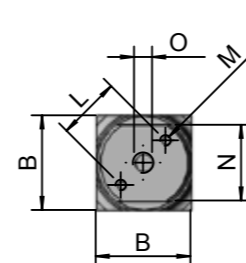
FBL+KTF+KT+KK-V



FBL+VF+KTF+KT+KK-V

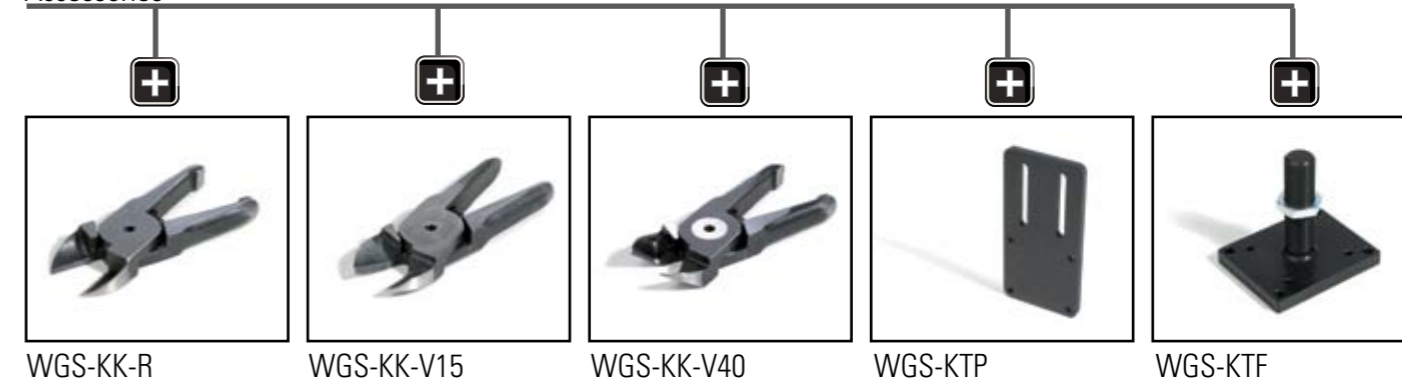
WGS-KT

Air nipper for sprue cutting. Available in three sizes. Standard blades, straight and angular type, are available in the WGS program.



Article no	Type	A	B	C	D	E	F	G	H	I	J	K	L	M	N	O	Pressure range	Cutting capacity plastic	Weight
022208	WGS-KT-10	113	36	20	23	18	30	28	M4	7	26	12	24	M4	30	G1/8"	4-6 bar	Ø 4 mm	230 g
022211	WGS-KT-20	129	45	20	24	19	40	36	M4	9	26	12	30	M5	36	G1/8"	5-6 bar	Ø 7 mm	390 g
022215	WGS-KT-30	170	56	20	30	20	60	46	M5	15	36	17	40	M6	46	G1/8"	5-6 bar	Ø 10 mm	705 g

Accessories



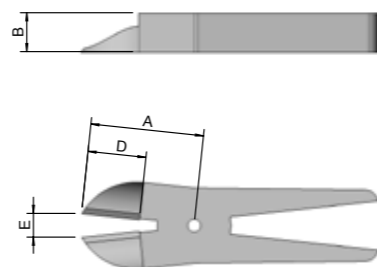
WGS-KK-R

WGS-KK-V15

WGS-KK-V40

WGS-KTP

WGS-KTF

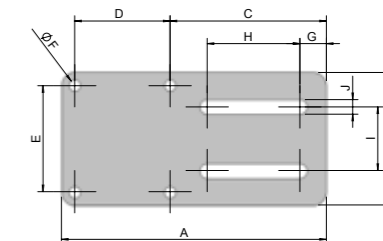


Article no	Type	A	B	D	E	For
022213	WGS-KK20R	35	12	18	11	WGS-KT-20
022218	WGS-KK30R	52	17	28	11	WGS-KT-30

WGS-KK20-R, KK30-R

Nipper blades for Air nippers KT-20 och KT-30.

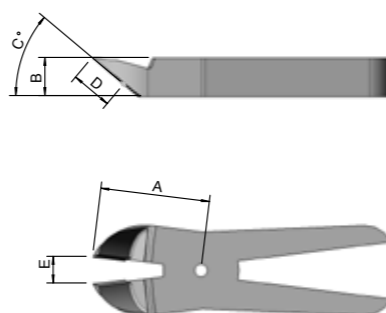
Note! Material for cutting has to be plastic parts only (not glass fiber-filled.)



Article no	Type	A	B	C	D	E	F	G	H	I	J	Screw	Weight
022223	WGS-KTP-10	80	40	48	28	30	4,3	8	30	24	5,5	M4x10	37 g
022224	WGS-KTP-20	100	50	59	36	40	4,3	10	35	24	5,5	M4x10	61 g
022225	WGS-KTP-30	120	70	69	46	60	5,5	10	45	24	5,5	M5x10	105 g
Material	Aluminium												
Thickness	5 mm												
Surface treatment	Anodized black												
Incl screw and washer													

WGS-KTP

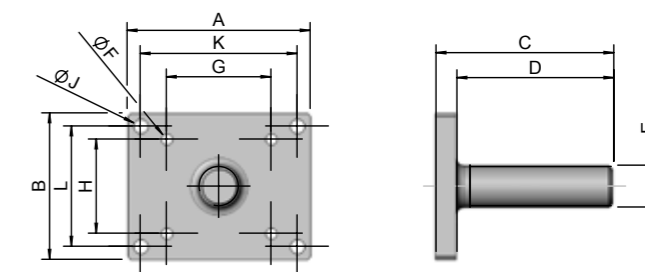
Air nipper plate for air nipper KT-10, KT-20 and KT-30.



Article no	Type	A	B	C	D	E	For
022209	WGS-KK10V15	35	12	15°	16	5	WGS-KT-10
022210	WGS-KK10V40	35	12	40°	13,5	5	WGS-KT-10
022212	WGS-KK20V15	35	12	15°	16	11	WGS-KT-20
022214	WGS-KK20V40	35	12	40°	13,5	11	WGS-KT-20
022216	WGS-KK30V15	66	17	15°	38	16	WGS-KT-30
022217	WGS-KK30V30	58	17	30°	25	15	WGS-KT-30

WGS-KK10-V, KK20-V, KK30-V

Angled blades for Air nippers KT-10, KT-20 and KT-30. Note! Material for cutting has to be plastic parts only (not glass fiber-filled.)



WGS-KTF

Air nipper plate for air nipper KT-10.

Article no	Type	A	B	C	D	E	F	G	H	J	K	L	Weight
022203	WGS-KTF10	38	36	55	50	G1/8"	4,3	30	28	-	-	-	28 g
022204	WGS-KTF20-30	70	56	68	60	M16x1	4,3	40	36	5,5	60	46	114 g
Material	Aluminium												
Thickness	5 mm												
Surface treatment	Anodized black												
Incl screw and washer													

About WGS profiles and couplings

The WGS Grip System includes aluminium profiles in four sizes, all in top-quality material for high torsional resistance and stability. The profiles are black anodized with a hard surface for long life.

The profiles have 1-6 slots, depending on their size

WGS-GP2209 1-slot profile, the smallest profile with external dimensions 22 x 9 mm (width x height). This profile only weighs 228 grams per meter, and is suitable for small grippers, sensor bars or external profiles on grippers.

WGS-GP2216 2-slot profile, the second smallest profile with external dimensions 22 x 16 mm (width x height). This profile weighs 382 grams per meter, and is suitable for small and medium small gripper frames, internal or external profiles on grippers.

WGS-GP3022 4-slot profile, the second largest profile with external dimensions 30 x 22 mm (width x height). This profile weighs 815 grams per meter, and is the most flexible type of profile as it has slots on all four sides. Suitable for large and medium-large gripper frames, internal or external profiles on grippers.

WGS-GP5030 6-slot profile, the largest profile with external dimensions 50 x 30 mm (width x height). This profile weighs 1,380 grams per meter, and is suitable for very large grippers, support frames and peripheral units. Usually used as supporting profiles on grippers. Slotted nuts are used to join together profiles or coupling parts. The slotted nut profile is designed for optimum locking with the friction surfaces positioned at a 60 degree angle to the gripping surface.

This creates greater resistance to the torque frequently generated in grippers on high-speed robots. The angled gripping surface presses along an extended part of the profile, preventing slots on the profile from deforming.

The slotted nuts come in two variants: single nuts with one screw (WGS-GPM-M5x10) and triple nuts with three screws (WGS-GPLM-M5x10) for tighter fastening.

Slotted nut components for lengthwise connection (WGS-GPLM-1000) are also available if you need to adapt the length to your specific requirements. The profiles can be combined in a wide variety of applications. Some examples are shown in the pictures below.



GPSVP



GPH



GPK



2xGPSV



GPVH



FP1+SF



GPJV



KFB

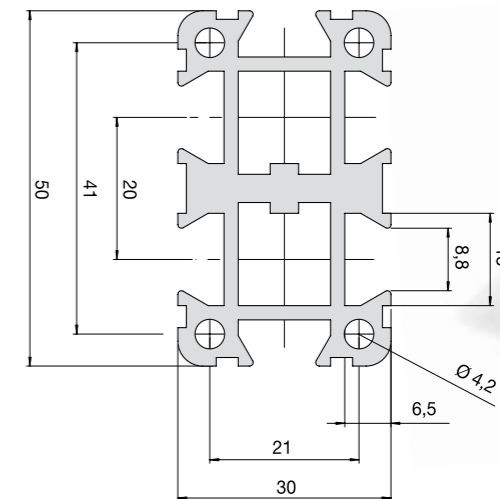
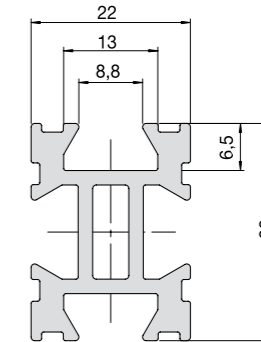
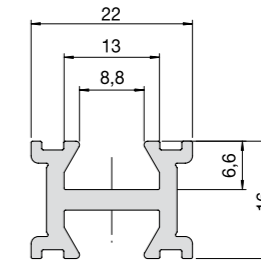
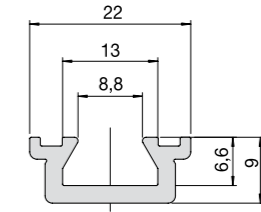
WGS-GP2209, -GP2216, -GP3022, -GP5030

Anodized aluminum profiles designed for optimal torsional rigidity relative their weight.

The profiles are high precision extruded to achieve best possible dimensional accuracy.

Available in lengths of 1 m GP3022 and GP5030 are also available in 2 m length.

Article no	Type	Weight	Length
022032	WGS-GP2209	228 g/m	1000 mm
022033	WGS-GP2216	382 g/m	1000 mm
022086	WGS-GP3022	815 g/m	1000 mm
022331	WGS-GP3022	815 g/m	2000 mm
022034	WGS-GP5030	1380 g/m	1000 mm
022330	WGS-GP5030	1380 g/m	2000 mm
Material	Aluminium		
Surface treatment	Anodized black		





WGS-GPM-M5x10

Slotted nut with screw M5 and washer.
Slotted nut profile for customized applications.

Article no	022036
Type	WGS-GPM-M5x10
Material	Steel
Surface treatment	Zink plated
Weight	5 g



WGS-GPLM-M5x10

Slotted nut with screw M5 and washer.
Slotted nut profile for customized applications.

Article no	022132
Type	WGS-GPLM-M5x10
Material	Steel
Surface treatment	Zink plated
Weight	13 g

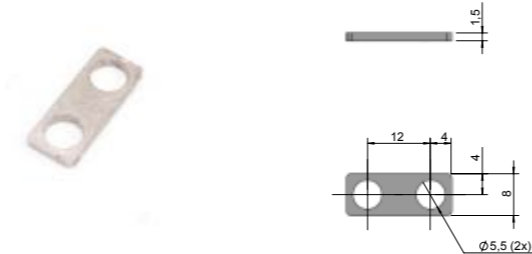


WGS-GPLM-1000

Slotted nut with screw M5 and washer.
Slotted nut profile for customized applications.

Article no	022113
Type	WGS-GPLM-1000
Material	Steel
Surface treatment	Zink plated
Weight	444 g/m

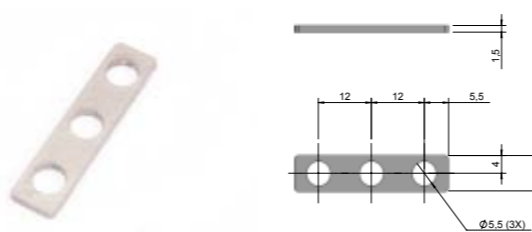
NEW!



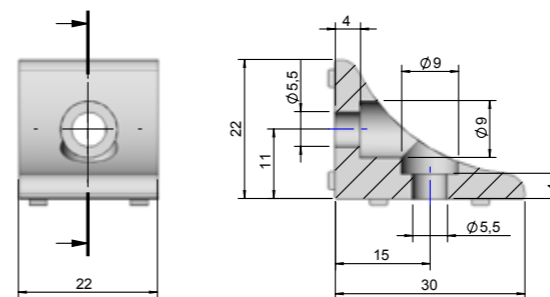
WGS-RPB-12,-RPB12-12

Long flatwasher
for more easy
assembly of
slotted nuts.

Article no	022416
Type	WGS-RPB-12
Material	Steel
Surface treatment	Zink plated
Weight	1.3 g



Article no	022417
Type	WGS-RPB-12-12
Material	Steel
Surface treatment	Zink plated
Weight	2.4 g



Accessories

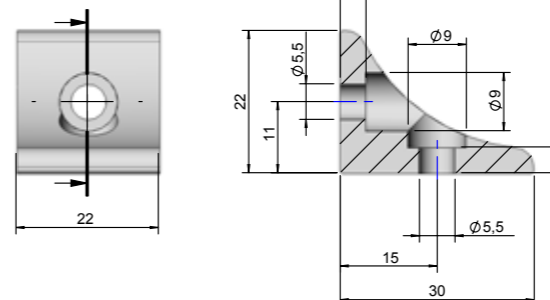


WGS-GPM

Article no	022107
Type	WGS-GPSV
Material	Aluminium
Surface treatment	Anodized black
Weight	16 g

WGS-GPSV

Angular support bracket for multi-functional connection of profiles in 4x90° positioning with guides.
Fits all types of WGS-profiles.



Accessories



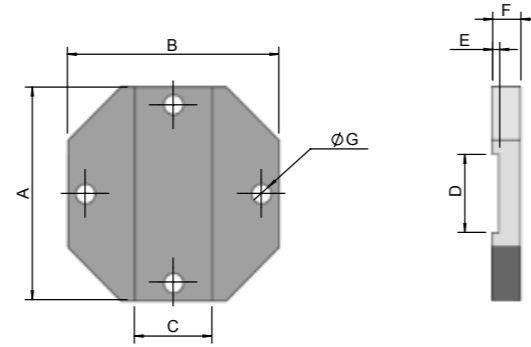
WGS-GPM

Article no	022292
Type	WGS-GPSVP
Material	Aluminium
Surface treatment	Anodized black
Weight	16 g

WGS-GPSVP

Angular support bracket for multi-functional connection of profiles in any free positioning without guides.
Fits all types of WGS-profiles.

NEW!



WGS-KFB22x22
WGS-KFB30x30

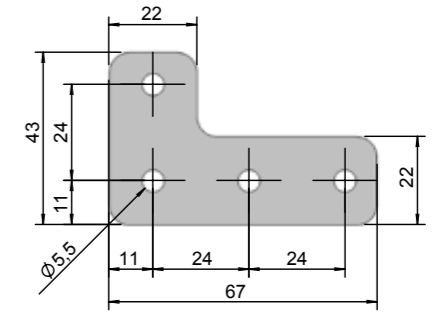
Cross mounting bracket for 2 profiles in 90° position. Two different brackets is available for profile width 22mm and 30mm.

Article no	Type	A	B	C	D	E	F	G	Weight
022414	WGS-KFB22X22	60	60	22	22	2	8	5,5	51 g
022415	WGS-KFB30X30	60	60	30	30	2	8	5,5	46 g

Incl screw M5x12 and washer



WGS-KFB30x30+GP3022

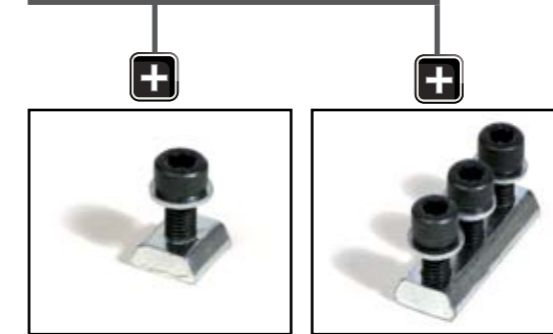


WGS-GPH

Corner bracket for single grooved profiles in angle.

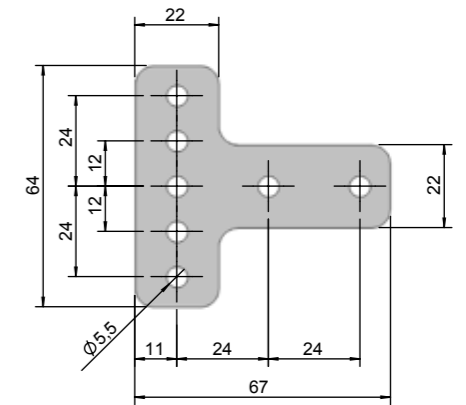
Article no	022045
Type	WGS-GPH
Material	Aluminium
Thickness	5 mm
Surface treatment	Anodized black
Weight	25 g

Accessories



WGS-GPM

WGS-GPLM

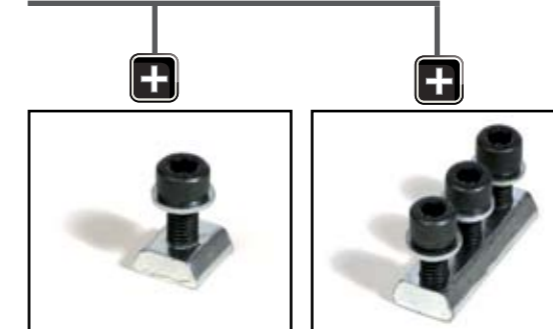


WGS-GPK

Cross bracket for single grooved profiles in T-angle.

Article no	022046
Type	WGS-GPK
Material	Aluminium
Thickness	5 mm
Surface treatment	Anodized black
Weight	31 g

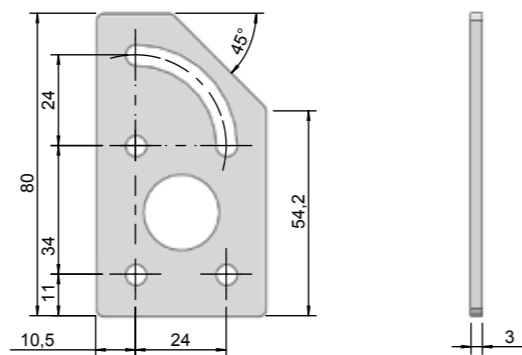
Accessories



WGS-GPM

WGS-GPLM

NEW!



Article no	022418
Type	WGS-GPJV
Material	Steel
Surface treatment	Zink plated
Weight	61 g
Incl 4 x screw M5x10 and 2 x WGS-RPB-12-12	

WGS-GPJV

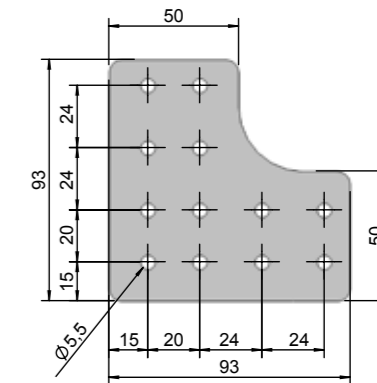
Fixingplate for adjustable angle between two profiles. Possible to adjust 0-90°.



WGS-GPJV



WGS-GPJV









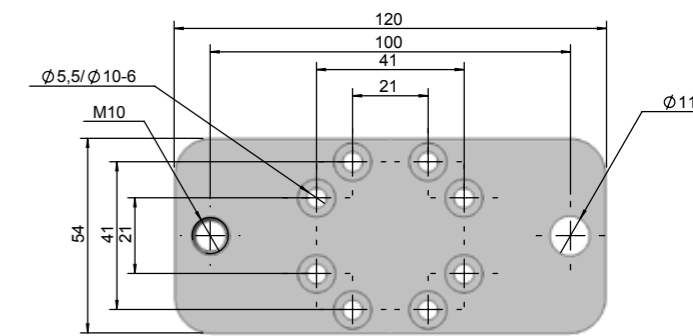
WGS-GPVH

Corner bracket for supporting profile GP5030.

Article no	022047
Type	WGS-GPVH
Material	Aluminium
Thickness	5 mm
Surface treatment	Anodized black
Weight	90 g

Accessories

- 

 WGS-GPM
- 

 WGS-GPLM
- 

 WGS-GP5030







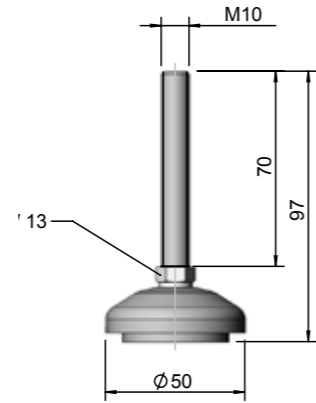
WGS-FP1

Foot plate for supporting profile GP5030 for designing frames.

Article no	022313
Type	WGS-FP1
Material	Aluminium
Thickness	10 mm
Surface treatment	Anodized black
Weight	178 g
Incl screw M6x20 (2 pcs) and washer	

Accessories

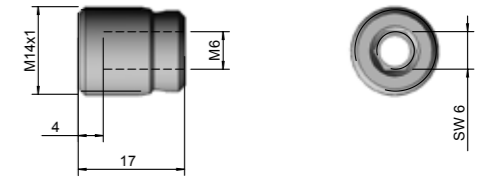
- 

 WGS-SF
- 

 WGS-GP5030



Article no	022133
Type	WGS-SF
Material	Steel, plastic
Surface treatment	Zinc plated
Weight	80 g
Incl nut M10	

WGS-SF

Adjustable foot for height adjustment to floor level. The foot has an anti-slip surface against floor.



Accessories

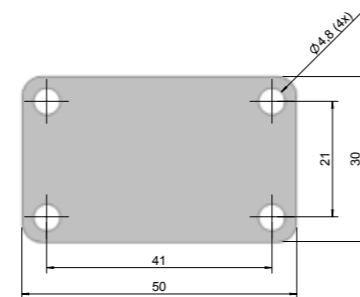


WGS-GP5030

WGS-GI-M6

Insert thread nipple for fastening of profiles or plates in the end of the profile.

Article no	022134
Type	WGS-GI M6
Material	Steel
Surface treatment	Zinc plated
Weight	16 g
Incl screw M6x60 and washer	



Accessories

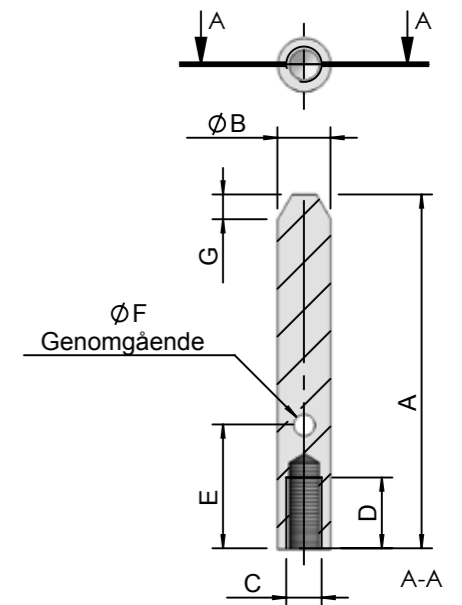


WGS-GP5030

WGS-TL5030

End cap for GP5030 profile included self tapping screws.

Article no	022100
Type	WGS-TL5030
Material	Aluminium
Thickness	2 mm
Surface treatment	Anodized black
Weight	8 g
Incl screw	



Article no	Type	A	B	C
022319	WGS-SP-100-15-G1/8"	15	G1/8"	20
022320	WGS-SP-100-25-M16x1	25	M16x1	32
Material	Plastic			

WGS-SP

Support pin for fixation of parts.

WGS-VNM-M5
022106

+

WGS-VBK-Mini
Ø 5,10

+

WGS-VPK-Hitemp
Ø 8,15,20

+

WGS-VBK-Hitemp 1,5
Ø 11,14,20

+

WGS-VBK-Hitemp 2,5
Ø 9, 14,20

WGS-VN-M5
022048

+

WGS-VPK-Midi
Ø 5 - Ø 20

+

WGS-VBK-Midi
Ø 5 - Ø 20

+

WGS-VBK-Midi-SR
Ø 20

WGS-VN-G1/8
022049

+

WGS-VPK-Midi
Ø 25 - Ø 40

+

WGS-VBK-Midi
Ø 25 - Ø 40

+

WGS-VBK-Midi-SR
Ø 25 - Ø 40

WGS-VNO-M5
022102

+

WGS-VOK 5x15

WGS-VNO-G1/8-1
022103

+

WGS-VOK 8x24

WGS-VNO-G1/8-2
022104

+

WGS-VOK 15x45

WGS-VNU-G1/8
024070

+

WGS-VPK-Hitemp
Ø 30, 40, 50

+

WGS-VBK-Hitemp 1,5
Ø 33, 43, 53

+

WGS-VBK-Hitemp 2,5
Ø 32, 42, 52

WGS-VNI-G1/8
024045

+

WGS-VPK-Hitemp
Ø 30, 40, 50

+

WGS-VBK-Hitemp 1,5
Ø 33, 43, 53

+

WGS-VBK-Hitemp 2,5
Ø 32, 42, 52

WGS-VNU-M5-PI1
024059

+

WGS-VBK-PI-SI1,5
Ø 5, 8

WGS-VNU-M5-PI2
024060

+

WGS-VBK-PI-SI1,5
Ø 10, 15

+

WGS-VBK-PI-PU2,5
Ø 10, 15

WGS-VNU-G1/8-PI1
024061

+

WGS-VBK-PI-SI1,5
Ø 20

WGS-VNU-G1/8-PI2
024062

+

WGS-VBK-PI-PU2,5
Ø 20

WGS-VNI-G1/8-PI1
024063

+

WGS-VBK-PI-SI1,5
Ø 30, 40

WGS-VNI-G1/8-PI2
024064

+

WGS-VBK-PI-PU2,5
Ø 35

WGS-VNI-G1/8-PI3
024065

+

WGS-VBK-PI-SI1,5
Ø 50

+

WGS-VBK-PI-PU2,5
Ø 52

WGS-VNM-M5
022106

Technical drawing showing dimensions: M5, $\phi 2$, 4, 5, 15, SW 8.

WGS-VN-M5
022048

Technical drawing showing dimensions: M5, $\phi 2.5$, 3, 3.5, 15, SW 14.

WGS-VN-G1/8
022049

Technical drawing showing dimensions: G1/8", M5, 6.5, 3.3, 16.5, SW 14.

WGS-VNO-M5
022102

Technical drawing showing dimensions: G1/8", SW13, 6, 25.2, $\phi 8.5$, $\phi 14$.

WGS-VNOG1/8-1
022103

Technical drawing showing dimensions: G1/8", M5, 4.5, 6.5, 16.5, SW 14.

WGS-VNO-G1/8-2
022104

Technical drawing showing dimensions: G1/8", M5, 5, 6.5, 21.5, SW 14.

WGS-VNU-G1/8
024070
NEW!

Technical drawing showing dimensions: G1/8", SW13, 6, 25.2, $\phi 8.5$, $\phi 14$.

WGS-VNI+G1/8
024045
NEW!

Technical drawing showing dimensions: G1/8", SW13, 9, 27.5, $\phi 8.5$, 14.

WGS-VNU-M5-PI1
024059
NEW!

Technical drawing showing dimensions: M5, $\phi 1.5$, 4, 13, 3.5, SW 7.

WGS-VNU-M5-PI2
024060
NEW!

Technical drawing showing dimensions: M5, $\phi 2.7$, 4, 17, SW 7.

WGS-VNU-G1/8-PI1
024061
NEW!

Technical drawing showing dimensions: G1/8", M5, 6, 3.5, $\phi 16$.

WGS-VNU-G1/8-PI2
024062
NEW!

Technical drawing showing dimensions: $\phi 15$, G1/8", M5, 12.7, 1.5, 6.

WGS-VNI-G1/8-PI1
024063
NEW!

Technical drawing showing dimensions: $\phi 20$, G1/8", 15.2, 8, SW 17.

WGS-VNI-G1/8-PI2
024064
NEW!

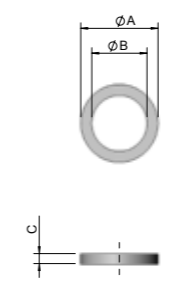
Technical drawing showing dimensions: $\phi 20$, G1/8", 15.2, 8, SW 17.

WGS-VNI-G1/8-PI3
024065
NEW!

Technical drawing showing dimensions: $\phi 28$, G1/8", 18.2, 8, SW 22.



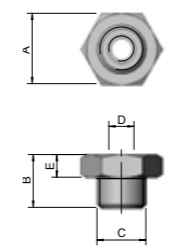
WGS-NP
Nylon seal in 3 sizes.



Article no	Type	A	B	C	Material
022052	WGS-NP-M5	8	5	1	Polyamide
022053	WGS-NP-G1/8"	14	10	1,8	Polyamide
022315	WGS-NP-G1/4"	18	13,5	1,8	Polyamide



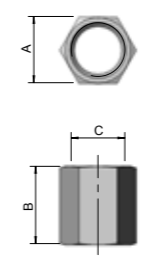
WGS-RN
Reduction nipple in 2 sizes.



Article no	Type	A	B	C	D	E	Material
022058	WGS-RN-M5-G1/8"	14	10,5	G1/8"	M5	4,5	Brass
022140	WGS-RN-G1/8"-M16x1	22	13	M16x1	G1/8"	5	Brass



WGS-B
Pipe coupling in 2 sizes.

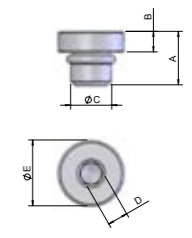


Article no	Type	A	B	C	Material
022092	WGS-B-M5	7	11	M5	Steel
022095	WGS-B-G1/8"	12	14	G1/8"	Steel

NEW!



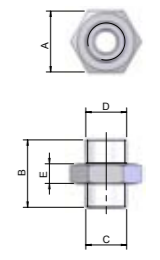
WGS-TPI
Cover in 4 sizes.



Article no	Type	A	B	C	D	E	Material
024021	WGS-TPI-M5	6.9	2.7	M5	2	$\phi 8$	Steel
024022	WGS-TPI-G1/8"	9.8	2.7	G1/8"	5	$\phi 15$	Steel
024023	WGS-TPI-G1/4"	11	3	G1/4"	6	$\phi 17$	Steel
022311	WGS-TP-M16x1	13	5	M16x1	19	-	Steel



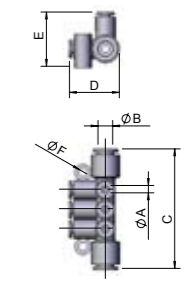
WGS-DN
Double nipple in 3 sizes.



Article no	Type	A	B	C	D	E	Material
022255	WGS-DN-M5	8	10,5	M5	M5	3,5	Brass
022256	WGS-DN-G1/8"	12	19,5	G1/8"	G1/8"	4,5	Brass
022310	WGS-DN-M5-G1/8"	14	15,5	M5	G1/8"	4,5	Brass



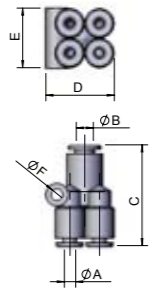
WGS-FDS-I
Manifold connector in 2 sizes.



Article no	Type	A	B	C	D	E	F	Material
022249	WGS-FDS-I-6x4	4	8	65	27	30	4,5	Plastic
022250	WGS-FDS-I-6x6	6	10	76	32	32	4,5	Plastic



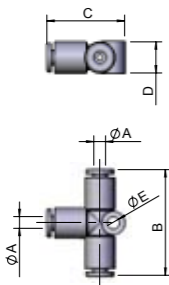
WGS-DKI
Delta connection.



Article no	Type	A	B	C	D	E	F	Material
022244	WGS-DKI-6-4	4	6	35,5	24	21	4,2	Plastic



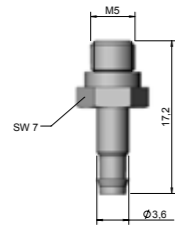
WGS-TI
T-connection
in 2 sizes.



Article no	Type	A	B	C	D	E	Material
022199	WGS-TI-3x4	4	36	26,5	10,6	4,2	Plastic
022200	WGS-TI-3x6	6	40	33,3	13	4,2	Plastic



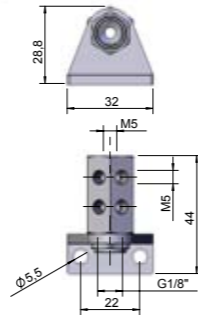
WGS-NPS
Straight tube nipple.



Article no	Type	Material
022054	WGS-NPS-M5	Steel



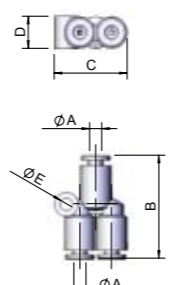
WGS-FDS
Manifold connector.



Article no	Type	Material
022248	WGS-FDS-9xM5	Brass, metal sheet



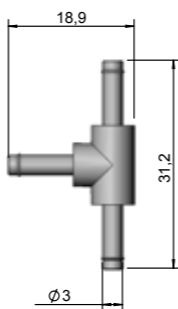
WGS-YKI
Y-connection in
2 sizes.



Article no	Type	A	B	C	D	E	Material
022242	WGS-YKI-4	4	34	24,1	10,6	4,2	Plastic
022243	WGS-YKI-6	6	37	28,5	13	4,2	Plastic



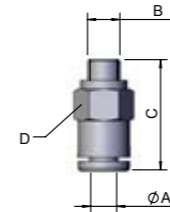
WGS-TR
T-shaped tube nipple.



Article no	Type	Material
022055	WGS-TR-3	Brass, plastic



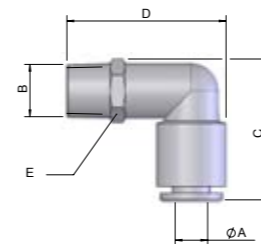
WGS-RKI
Straight connection in 4 sizes.



Article no	Type	A	B	C	D	Material
022194	WGS-RKI-4-M5	4	M5	17	8	Brass, plastic
022234	WGS-RKI-4-G1/8"	4	G1/8"	22	10	Brass, plastic
022195	WGS-RKI-6-M5	6	M5	17,8	10	Brass, plastic
022196	WGS-RKI-6-G1/8"	6	G1/8"	22,5	12	Brass, plastic



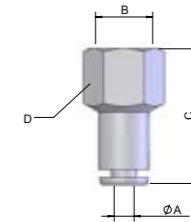
WGS-VKI
Angled connection in 4 sizes.



Article no	Type	A	B	C	D	E	Material
022197	WGS-VKI-4-M5	4	M5	19,6	17,4	7	Brass, plastic
022257	WGS-VKI-4-G1/8"	4	G1/8"	23	26	10	Brass, plastic
022237	WGS-VKI-6-M5	6	M5	20,5	20,2	7	Brass, plastic
022198	WGS-VKI-6-G1/8"	6	G1/8"	25,8	29,4	10	Brass, plastic



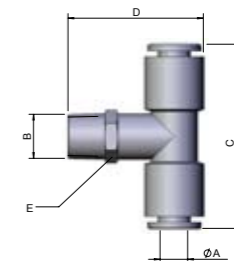
WGS-RKIG
Straight connection in 2 sizes.



Article no	Type	A	B	C	D	Material
022235	WGS-RKIG-4-G1/8"	4	G1/8"	27	14	Brass, plastic
022236	WGS-RKIG-6-G1/8"	6	G1/8"	27,5	14	Brass, plastic



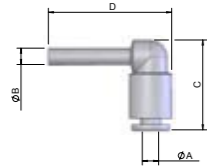
WGS-TIG
T-connection in 4 sizes.



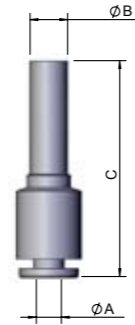
Article no	Type	A	B	C	D	E	Material
022238	WGS-TIG-4-M5	4	M5	31,2	18,4	7	Brass, plastic
022239	WGS-TIG-4-G1/8"	4	G1/8"	36	27,2	10	Brass, plastic
022240	WGS-TIG-6-M5	6	M5	32	20,4	7	Brass, plastic
022241	WGS-TIG-6-G1/8"	6	G1/8"	40	29,4	10	Brass, plastic



WGS-VKI-RVI
Angled connection in 3 sizes.



WGS-RRI
Straight reduction nipple in 3 sizes.

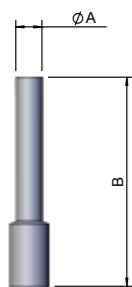


Article no	Type	A	B	C	D	Material
022191	WGS-VKI-RVI-4	4	4	22	29	Plastic
022193	WGS-VKI-RVI-4-6	4	6	22	30	Plastic
022192	WGS-VKI-RVI-6	6	6	25	32,5	Plastic

Article no	Type	A	B	C	Material
022245	WGS-RRI-6-4	4	6	34,5	Plastic
022246	WGS-RRI-8-6	6	8	37	Plastic
022247	WGS-RRI-10-8	8	10	41	Plastic



WGS-BP
Insert plug in 2 sizes.



Article no	Type	A	B	Material
022201	WGS-BP-4	4	32	Plastic
022202	WGS-BP-6	6	35	Plastic



WGS-SS, -PUR
Tubes for vacuum and pressure system. The silicone tube is of high flexible type for small spaces. Fits only to nipples NPS-M5 and TR-3. The polyurethane tubes are of flexible type and fits to all connections in the WGS-program.



Article no	Type	A	B	Material
022063	WGS-SS 6x3	6	3	Silicon
022232	WGS-PUR 4x2,5	4	2,5	Polyurethane
022233	WGS-PUR 6x4	6	4	Polyurethane



EOAT (End Of Arm Tooling)

Quantity	Type
1	WGS-QLGD1
1	WGS-GPI3
1	WGS-GPV2
2	WGS-GDP2
7	WGS-GPF1
2	WGS-KBF
1	WGS-GP2216
4	WGS-GP3022

Quantity	Type
2	WGS-IFB
2	WGS-VBK-PI-SI2.5
2	WGS-VBK-Hitemp1.5
2	WGS-IFBV
2	WGS-JFU
1	WGS-GPPF
4	WGS-GPJV
2	WGS-GF2

Degating station

Quantity	Type
2	WGS-GPVH
2	WGS-FP1
7	WGS-GP-5030
3	WGS-FBL1-M16
3	WGS-KTI-20
3	WGS-KT-20
2	WGS-KK-20V
1	WGS-KK-20R
8	WGS-GPSV
4	WGS-TL-5030



Paper feeding station



Quantity	Type
4	WGS-GPVH
4	WGS-FP1
4	WGS-SF
14	WGS-GP-5030
4	WGS-GP-3022
6	WGS-GP-2216
26	WGS-GPSV
4	WGS-TL-5030
2	WGS-GPF1-12



WEMO ROBOT SYSTEM



WEMO GRIP SYSTEM



WEMO CONVEYOR SYSTEM



WEMO SAFETY SYSTEM



WEMO PERIPHERAL SYSTEM



WEMO APPLICATION SYSTEM

COMPETENCE IN AUTOMATION



WEMO AUTOMATION AB Bredastensvägen 12 SE-331 44 Värnamo WEMO.SE
Tel: +46 370 658500 Fax: +46 370 658519 Lat: N 57° 9,461" Long: E 14° 4,728"

*We reserve the right to make technical changes
All rights reserved incl. translations rights*